



# LABOUR FORCE

NEW SOUTH WALES AND  
AUSTRALIAN CAPITAL TERRITORY

EMBARGO: 11:30AM (CANBERRA TIME) FRI 28 JULY 2000

## CONTENTS

	<i>page</i>
Notes .....	2
 SUMMARY OF FINDINGS	
New South Wales .....	3
Australian Capital Territory .....	8
 LIST OF TABLES AND GRAPHS	
New South Wales .....	11
Australian Capital Territory .....	12
 INFORMATION	
Explanatory notes .....	46
Appendix:	
Supplementary topics .....	51
Regions of NSW and ACT .....	52
Regions of NSW and ACT—maps .....	57
Technical note: data reliability .....	58
Standard errors .....	61

- For further information about these and related statistics, contact Kevin Fagan on Sydney 02 9268 4315 or the National Information Service on 1300 135 070.

## NOTES

**FORTHCOMING ISSUES**                      *ISSUE (Quarter)*                      *EXPECTED RELEASE DATE*

	August 2000	27 October 2000
	November 2000	2 February 2001

**ABOUT THIS PUBLICATION**

This publication contains estimates of the civilian labour force in New South Wales (NSW) and the Australian Capital Territory (ACT) derived from the Labour Force Survey (LFS) component of the Monthly Population Survey, which is conducted on a sample basis throughout Australia. Explanatory notes for data contained in this publication can be found on page 46. Care should be taken in the interpretation of month-to-month movements in the estimates. Survey estimates are subject to sampling and non-sampling variability as explained in the Technical note on data reliability on page 58.

**SYMBOLS AND OTHER USAGES**

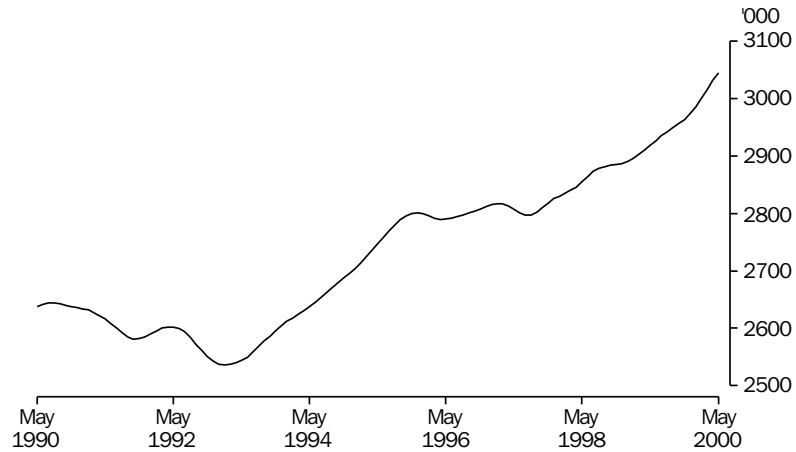
A	Area
C	City
MSR	Major Statistical Region
n.e.c.	Not elsewhere classified
SD	Statistical Division
SR	Statistical Region
SRS	Statistical Region Sector
*	Subject to sampling variability too high for most practical purposes. See the Technical note on data reliability.
. .	Not applicable
—	Nil or rounded to zero (including null cells)

Gregory W. Bray  
Regional Director  
New South Wales

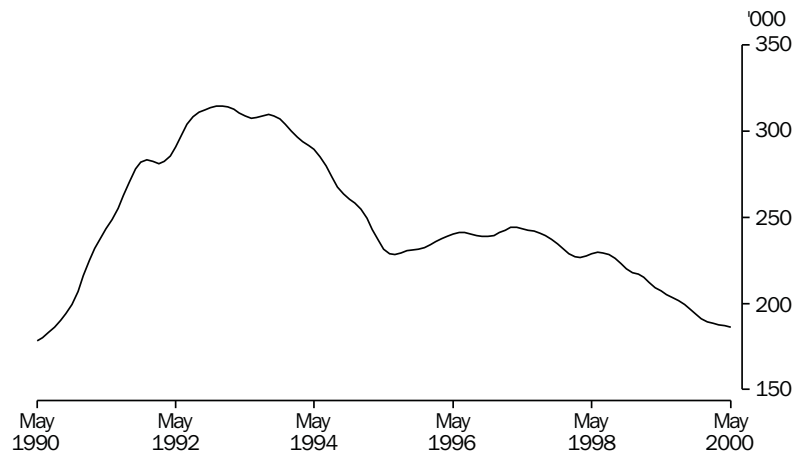
## SUMMARY OF FINDINGS—NEW SOUTH WALES

### TREND ESTIMATES

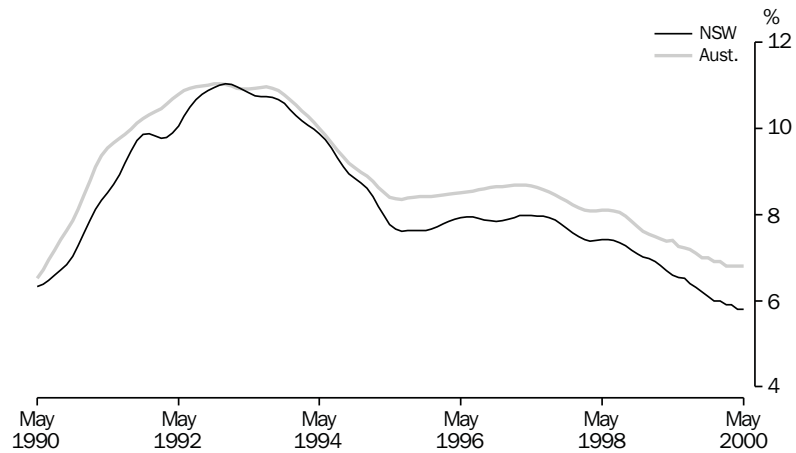
**Employed persons** The trend estimate of employed persons has risen steadily since July 1997. It reached 3,044,900 in May 2000.



**Unemployed persons** The trend estimate of unemployed persons in NSW peaked at 244,000 in April 1997. Since then it has fallen steadily and reached 186,000 in May 2000.



Unemployment rate The trend unemployment rate in NSW reached a high of 8.0% in April 1997. Since then it has fallen steadily to reach 5.8% in May 2000.



Participation rate and labour force The trend estimate of the participation rate in NSW remained fairly steady throughout most of 1999. In 2000 it has moved upward, rising from 62.0% in January to 62.9% in May 2000.

The trend estimated labour force in NSW remained fairly steady over the period from August 1998 to January 1999. Since then it has risen steadily and reached 3,230,900 in May 2000.

#### SEASONALLY ADJUSTED ESTIMATES

The seasonally adjusted estimate of employment in NSW rose steadily throughout most of 1999 and 2000 and reached 3,053,400 in May 2000. The seasonally adjusted estimate of the number of unemployed moved downward in 1999 and 2000, reaching 185,100 in May 2000. The seasonally adjusted estimate of the unemployment rate also moved downwards in 1999 and 2000. Between May 1999 and May 2000 it fell from 6.5% to 5.7%.

#### REGIONS OF NSW

While the Labour Force Survey (LFS) is designed primarily to produce reliable estimates at the national and State/Territory level, it also delivers estimates for a number of regions within States. As with national and State estimates, regional labour force estimates are subject to sampling error. Since estimates for regions are components of corresponding estimates at the State level—and are thus based on a considerably smaller sample size—they are subject to higher relative standard errors. Care should therefore be taken in interpretation of regional estimates, particularly month-to-month movements.

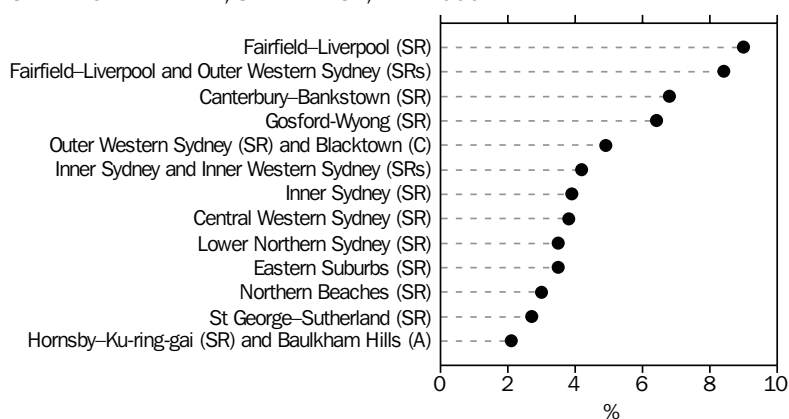
Sydney There were 2,017,100 employed people in the Sydney Major Statistical Region (MSR) in May 2000, a rise of 82,000 over the year from May 1999. Between May 1999 and May 2000, the unemployment rate fell from 5.2% to 4.6%.

Regional unemployment rates within the Sydney MSR in May 2000 ranged from 2.1% in Hornsby-Ku-ring-gai Statistical Region (SR) and Baulkham Hills Area to 9.0% in Fairfield–Liverpool SR. Participation rates varied from 56.4% in Gosford–Wyong SR to 68.5% in Lower Northern Sydney SR.

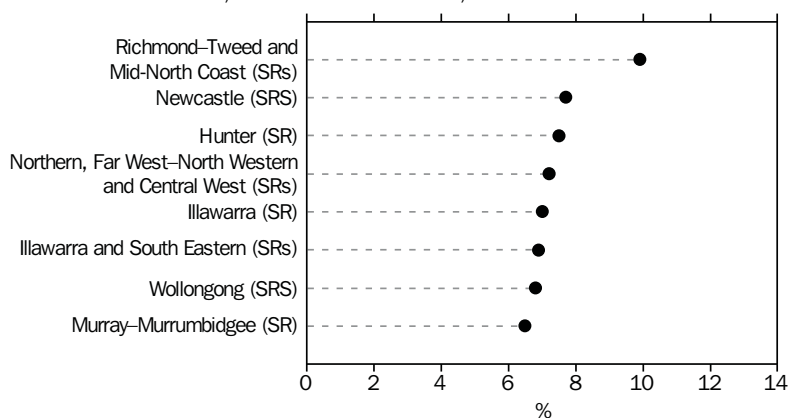
Balance of NSW There were 1,027,300 employed people in Balance of NSW MSR in May 2000, 49,500 more than in May 1999. The unemployment rate in May 2000 was 7.6%, more than one percentage point down on the figure recorded in May 1999.

Unemployment rates ranged from 6.5% in the Murray-Murrumbidgee SRs to 9.9% in the Richmond–Tweed and Mid-North Coast SRs. Participation rates varied from 54.9% in the Richmond–Tweed and Mid-North Coast SRs to 69.8% in the Murray-Murrumbidgee SRs.

UNEMPLOYMENT RATE, SYDNEY MSR, MAY 2000



UNEMPLOYMENT RATE, BALANCE OF NSW MSR, MAY 2000



## INDUSTRY AND OCCUPATION

The industry in NSW with the highest gain in employment in the year to May 2000 was Manufacturing with an increase of 43,400 persons or 12.7%. The largest fall occurred in the Wholesale trade sector, down 44,500 persons or 22.5%.

The industries with the highest employment in May 2000 were Retail trade with 436,000 persons (14.3% of total employed persons in NSW) and Manufacturing with 384,800 persons (12.6% of total employed).

The major occupation group with the largest annual gain in employment in the year to May 2000 was Tradespersons and related workers with an increase of 40,500 persons (11.3%) while the largest percentage fall was in the Managers and administrators group, down by 14,300 persons or 6.1%.

AGE

The unemployment rate at May 2000 decreased with age from 14.5% for 15–19 year olds to 3.4% for the 45–54 years age group. The rate for the age group 55 years and over was 2.8%.

BIRTHPLACE

In May 2000, the unemployment rate for Australian-born people in NSW was 5.3%. For those born overseas in the main English-speaking countries the rate was also 5.3% while for those born in other countries it was 7.1%.

DURATION OF UNEMPLOYMENT

In May 2000, the average (mean) duration of unemployment was 56.0 weeks and the median duration of unemployment was 18 weeks. Approximately one-fifth of all unemployed persons had been unemployed for two years or more.

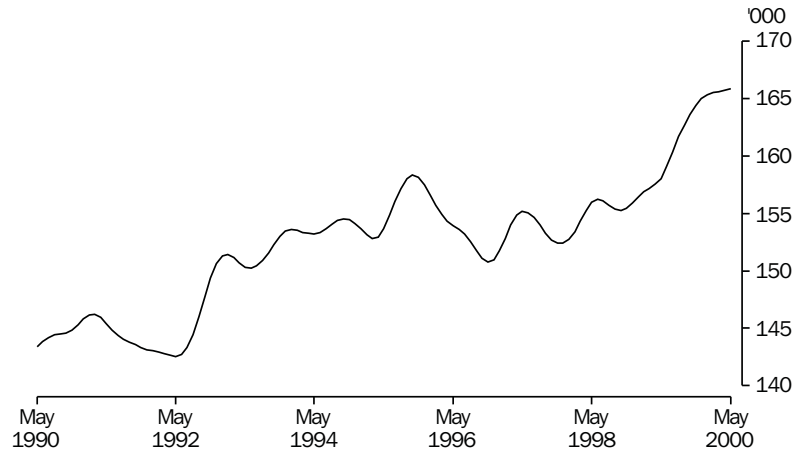
Average duration of unemployment



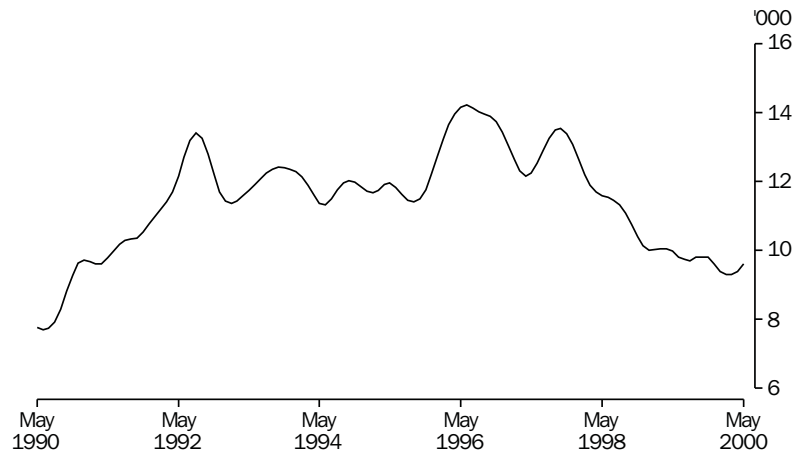
## SUMMARY OF FINDINGS—AUSTRALIAN CAPITAL TERRITORY

### TREND ESTIMATES

**Employed persons** The trend estimate of employed persons in the ACT has been rising steadily since October 1998 and in May 2000 was 165,900.

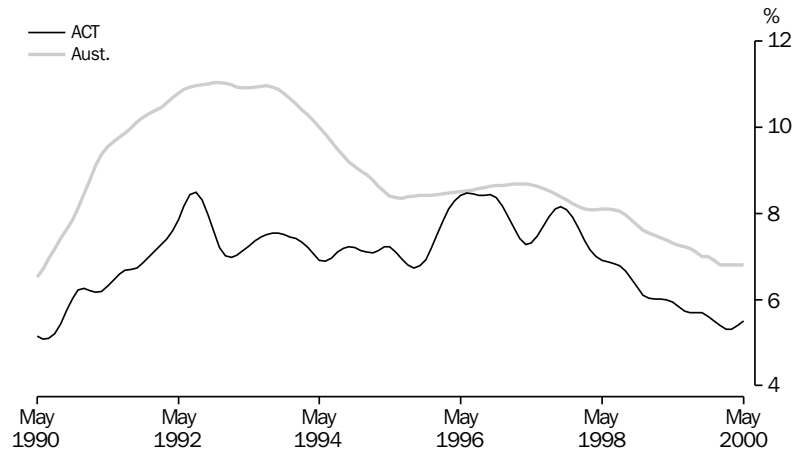


**Unemployed persons** From a peak of 13,500 in October 1997, the trend estimate of unemployment in the ACT moved steadily downwards for more than two years. It reached 9,300 in March 2000 before rising to 9,600 in May 2000.





Unemployment rate The trend unemployment rate in the ACT fell steadily throughout 1999 and reached 5.3% in March 2000. It then rose slightly to reach 5.5% in May 2000.



Participation rate and labour force The ACT trend participation rate rose gradually throughout 1999 and peaked at 73.2% in December 1999. It has since fallen slightly, reaching 72.7% in May 2000. The trend labour force estimate was 175,400 in May 2000.

INDUSTRY AND OCCUPATION

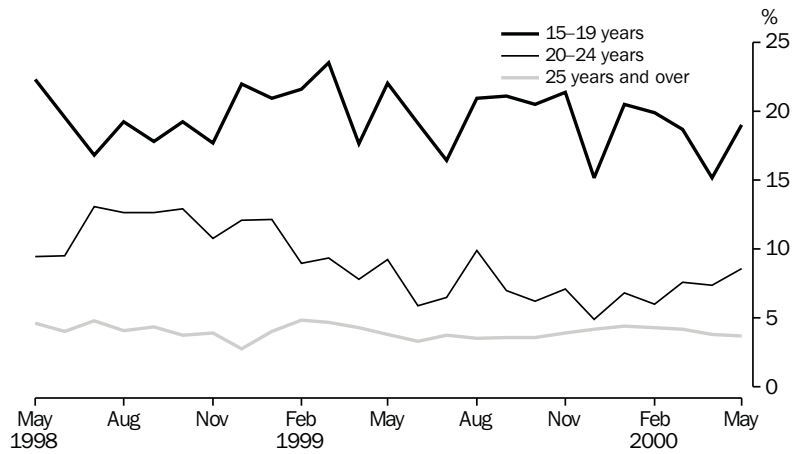
There was an average of 38,100 people employed in Government administration and defence in the ACT for the year ending May 2000, a decrease of 1,100 on the average for the previous year. This industry sector accounted for 23.2% of total employment in the ACT in May 2000. Retail trade accounted for 14.3% of total employment and Property and business services 13.1%.

For the year ending May 2000, the largest occupation group in the ACT was Professionals. This group had an average of 43,600 employed persons over the year, constituting 26.6% of the total number of employed persons.

AGE

In May 2000, the proportion of employed people working part-time in the ACT ranged from 66.9% of 15–19 year olds to 19.3% of those aged 25 years and over. The average weekly hours worked by employed persons in the age group 15–19 was 19.7 while those in the age group 25 and over worked an average of 37.2 hours. The unemployment rates for these age groups was 19.0% and 3.7%, respectively.

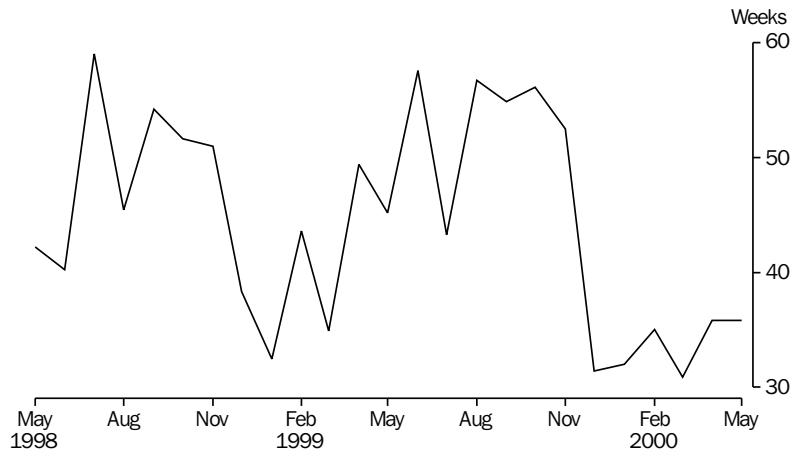
Unemployment rate by age



DURATION OF UNEMPLOYMENT

The average duration of unemployment in the ACT in May 2000 was 35.8 weeks. The average has ranged between 31 and 57 weeks over the past year.

Average duration of unemployment



## LIST OF TABLES AND GRAPHS

NEW SOUTH WALES		Page
Tables	Labour force status:	
	<b>1</b> Original series	13
	<b>2</b> Seasonally adjusted and trend series	14
	<b>3</b> Age, May 2000	16
	<b>4</b> Persons aged 15–24 by full-time educational attendance, May 2000	17
	<b>5</b> Family status, May 2000	18
Graphs	Labour force status:	
	Trend series, May 1990–May 2000:	
	Employed males	15
	Employed females	15
	Unemployed males	15
	Unemployed females	15
	Male unemployment rate	15
	Female unemployment rate	15
	Male participation rate	15
	Female participation rate	15
Tables	Employed persons:	
	<b>6</b> Status in employment	18
	<b>7</b> Age	19
	<b>8</b> Industry, May 1999 and May 2000	20
	<b>9</b> Occupation, May 1999 and May 2000	22
Graphs	Employed persons:	
	Annual change in employment by age, May 1999–May 2000	19
	Annual change in employment by industry division, May 1999–May 2000	21
	Annual change in employment by occupation group, May 1999–May 2000	23
Tables	Unemployed persons:	
	<b>10</b> Age	24
	<b>11</b> Unemployment rate by age	24
	<b>12</b> Industry and occupation of last full-time job, May 2000	25
	<b>13</b> Duration of unemployment	26
	<b>14</b> Unemployment rate by birthplace and period of arrival	26
	<b>15</b> Duration of unemployment by age	27
Graphs	Unemployment rate:	
	Unemployment rate by age, May 1998–May 2000	25
	Unemployment rate by period of arrival of overseas born, May 2000	26

Tables	Regional data:	
	Labour force status	
	<b>16</b> Sydney Major Statistical Region	28
	<b>17</b> Balance of NSW Major Statistical Region	29
	Employed persons:	
	<b>18</b> Industry and occupation, Sydney Major Statistical Region and Balance of NSW Major Statistical Region, May 2000	30
	<b>19</b> Labour force status of regions of NSW and ACT	31
AUSTRALIAN CAPITAL TERRITORY		
Tables	Labour force status:	
	<b>20</b> Original series	39
	<b>21</b> Trend series	40
	<b>22</b> Age, May 2000	42
	<b>23</b> Non-institutionalised persons, birthplace and year of arrival, May2000	42
Graphs	Labour force status:	
	Trend series, May 1990–May 2000	
	Employed males	41
	Employed females	41
	Unemployed males	41
	Unemployed females	41
	Male unemployment rate	41
	Female unemployment rate	41
	Male participation rate	41
	Female participation rate	41
Tables	Employed persons:	
	<b>24</b> Industry, average for year ending May 1999 and May 2000	43
	<b>25</b> Occupation, average for year ending May 1999 and May 2000	44
	Unemployed persons:	
	<b>26</b> Long-term unemployment	45
Graphs	Employed persons:	
	Average employment by industry division, year ending May 1999 and May 2000	43
	Average employment by occupation group, year ending May 1999 and May 2000	44
	Unemployed persons:	
	Long-term unemployed as a proportion of total unemployed, December 1998–May 2000	45

TABLE 1. LABOUR FORCE STATUS: ORIGINAL SERIES, NSW

Month	Employed			Unemployed			Labour force ('000)	Not in labour force ('000)	Civilian population aged 15 and over ('000)	Unemployment rate (per cent)	Participation rate (per cent)
	Full-time workers ('000)	Part-time workers ('000)	Total ('000)	Looking for full-time work ('000)	Looking for part-time work ('000)	Total ('000)					
MALES											
May—											
1996	1,408.6	184.0	1,592.6	117.6	18.6	136.2	1,728.8	659.3	2,388.0	7.9	72.4
1997	1,408.4	189.7	1,598.1	126.3	15.6	141.9	1,740.0	680.8	2,420.8	8.2	71.9
1998	1,435.3	181.0	1,616.3	114.6	17.4	132.1	1,748.4	705.9	2,454.3	7.6	71.2
1999—											
March	1,454.3	207.5	1,661.9	102.9	23.2	126.1	1,788.0	695.2	2,483.1	7.1	72.0
April	1,456.1	201.7	1,657.8	95.6	19.9	115.5	1,773.3	713.3	2,486.6	6.5	71.3
May	1,460.0	202.6	1,662.7	93.3	16.8	110.1	1,772.8	717.2	2,490.0	6.2	71.2
2000—											
February	1,503.6	190.4	1,694.0	95.8	18.0	113.8	1,807.8	713.1	2,520.9	6.3	71.7
March	1,494.2	207.6	1,701.8	93.5	20.6	114.1	1,815.9	708.2	2,524.0	6.3	71.9
April	1,504.7	211.9	1,716.6	81.8	18.6	100.5	1,817.1	710.5	2,527.6	5.5	71.9
May	1,504.2	215.2	1,719.5	79.7	18.5	98.2	1,817.7	713.5	2,531.1	5.4	71.8
MARRIED FEMALES											
May—											
1996	393.1	322.9	716.0	23.7	14.2	37.9	754.0	672.4	1,426.4	5.0	52.9
1997	401.3	312.6	713.9	22.4	16.7	39.1	753.0	654.1	1,407.1	5.2	53.5
1998	395.6	332.6	728.1	26.4	10.7	37.1	765.2	682.3	1,447.5	4.8	52.9
1999—											
March	400.4	330.5	730.8	24.1	14.2	38.2	769.1	678.9	1,448.0	5.0	53.1
April	399.5	331.9	731.3	22.6	11.5	34.1	765.5	695.0	1,460.5	4.5	52.4
May	399.2	335.8	735.0	18.6	13.6	32.2	767.2	695.9	1,463.1	4.2	52.4
2000—											
February	441.6	338.7	780.3	21.7	14.2	35.9	816.2	672.5	1,488.8	4.4	54.8
March	449.9	344.1	794.1	21.6	15.2	36.8	830.8	654.0	1,484.9	4.4	56.0
April	456.0	344.2	800.2	24.1	10.2	34.3	834.5	657.1	1,491.6	4.1	55.9
May	456.1	345.6	801.7	20.0	13.4	33.3	835.1	659.2	1,494.3	4.0	55.9
ALL FEMALES											
May—											
1996	704.9	491.2	1,196.1	61.8	32.8	94.6	1,290.7	1,187.9	2,478.5	7.3	52.1
1997	721.9	486.5	1,208.4	66.5	34.5	101.0	1,309.4	1,202.7	2,512.1	7.7	52.1
1998	710.2	513.9	1,224.1	68.2	25.6	93.7	1,317.8	1,225.5	2,543.3	7.1	51.8
1999—											
March	728.8	509.5	1,238.3	64.3	44.4	108.7	1,347.0	1,223.3	2,570.2	8.1	52.4
April	726.0	516.6	1,242.6	62.5	36.0	98.5	1,341.2	1,232.0	2,573.2	7.3	52.1
May	729.5	520.7	1,250.2	56.8	33.2	90.0	1,340.3	1,235.9	2,576.1	6.7	52.0
2000—											
February	755.7	526.6	1,282.3	57.0	41.2	98.2	1,380.5	1,222.7	2,603.2	7.1	53.0
March	771.1	536.7	1,307.8	57.0	35.4	92.4	1,400.2	1,205.4	2,605.6	6.6	53.7
April	791.3	527.4	1,318.7	52.1	30.4	82.4	1,401.1	1,207.3	2,608.4	5.9	53.7
May	784.9	540.1	1,324.9	53.2	30.5	83.7	1,408.7	1,202.5	2,611.2	5.9	53.9
PERSONS											
May—											
1996	2,113.5	675.2	2,788.6	179.4	51.4	230.8	3,019.4	1,847.1	4,866.6	7.6	62.0
1997	2,130.3	676.2	2,806.5	192.8	50.1	242.9	3,049.4	1,883.5	4,932.8	8.0	61.8
1998	2,145.5	694.9	2,840.4	182.8	43.0	225.8	3,066.2	1,931.4	4,997.6	7.4	61.4
1999—											
March	2,183.2	717.0	2,900.2	167.2	67.6	234.8	3,134.9	1,918.4	5,053.4	7.5	62.0
April	2,182.1	718.3	2,900.4	158.1	55.9	214.0	3,114.5	1,945.3	5,059.8	6.9	61.6
May	2,189.6	723.3	2,912.9	150.2	50.0	200.2	3,113.1	1,953.1	5,066.1	6.4	61.4
2000—											
February	2,259.3	717.0	2,976.3	152.8	59.2	212.0	3,188.3	1,935.7	5,124.0	6.6	62.2
March	2,265.4	744.2	3,009.6	150.4	56.0	206.5	3,216.1	1,913.6	5,129.7	6.4	62.7
April	2,296.0	739.3	3,035.3	133.9	49.0	182.9	3,218.2	1,917.8	5,136.0	5.7	62.7
May	2,289.1	755.3	3,044.4	132.8	49.1	181.9	3,226.3	1,916.0	5,142.3	5.6	62.7

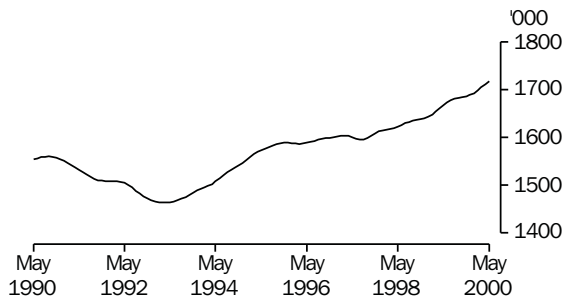
**TABLE 2. LABOUR FORCE STATUS: SEASONALLY ADJUSTED AND TREND SERIES, NSW**

Month	Seasonally adjusted series					Trend series (a)				
	Employed ( <i>'000</i> )	Unemp- loyed ( <i>'000</i> )	Labour force ( <i>'000</i> )	Unemp- loyment rate (per cent)	Partici- pation rate (per cent)	Employed ( <i>'000</i> )	Unemp- loyed ( <i>'000</i> )	Labour force ( <i>'000</i> )	Unemp- loyment rate (per cent)	Partici- pation rate (per cent)
MALES										
May—										
1996	1,594.1	139.6	1,733.7	8.1	72.6	1,588.6	143.8	1,732.4	8.3	72.5
1997	1,600.9	145.7	1,746.5	8.3	72.1	1,600.7	142.2	1,742.8	8.2	72.0
1998	1,619.8	135.7	1,755.5	7.7	71.5	1,621.9	134.4	1,756.3	7.7	71.6
1999—										
March	1,661.9	121.2	1,783.1	6.8	71.8	1,654.8	120.4	1,775.2	6.8	71.5
April	1,656.9	118.1	1,775.0	6.7	71.4	1,661.1	117.2	1,778.3	6.6	71.5
May	1,666.8	113.2	1,780.0	6.4	71.5	1,667.1	115.0	1,782.2	6.5	71.6
June	1,670.6	112.2	1,782.8	6.3	71.5	1,672.4	113.9	1,786.3	6.4	71.7
July	1,681.1	109.6	1,790.8	6.1	71.7	1,677.0	113.3	1,790.3	6.3	71.7
August	1,678.8	115.2	1,794.0	6.4	71.8	1,680.9	113.0	1,793.8	6.3	71.8
September	1,684.6	121.7	1,806.3	6.7	72.2	1,683.8	112.4	1,796.2	6.3	71.8
October	1,689.0	110.2	1,799.3	6.1	71.8	1,685.5	111.7	1,797.3	6.2	71.7
November	1,686.4	97.0	1,783.4	5.4	71.0	1,686.8	110.8	1,797.6	6.2	71.6
December	1,688.3	118.2	1,806.6	6.5	71.8	1,689.1	109.7	1,798.8	6.1	71.6
2000—										
January	1,685.9	111.5	1,797.5	6.2	71.4	1,693.2	108.5	1,801.7	6.0	71.6
February	1,701.9	103.3	1,805.2	5.7	71.6	1,698.8	107.4	1,806.2	5.9	71.6
March	1,701.6	109.7	1,811.2	6.1	71.8	1,705.3	106.1	1,811.4	5.9	71.8
April	1,715.6	102.7	1,818.3	5.6	71.9	1,711.9	104.7	1,816.5	5.8	71.9
May	1,724.1	100.9	1,825.0	5.5	72.1	1,718.0	103.4	1,821.4	5.7	72.0
FEMALES										
May—										
1996	1,195.4	96.8	1,292.2	7.5	52.1	1,201.6	96.2	1,297.8	7.4	52.4
1997	1,209.0	102.6	1,311.6	7.8	52.2	1,207.4	100.9	1,308.3	7.7	52.1
1998	1,226.2	94.7	1,320.8	7.2	51.9	1,232.9	94.0	1,327.0	7.1	52.2
1999—										
March	1,242.3	98.4	1,340.6	7.3	52.2	1,249.0	91.7	1,340.7	6.8	52.2
April	1,246.3	94.7	1,341.0	7.1	52.1	1,250.1	91.5	1,341.6	6.8	52.1
May	1,253.7	90.7	1,344.3	6.7	52.2	1,251.3	91.5	1,342.7	6.8	52.1
June	1,256.2	89.4	1,345.6	6.6	52.2	1,253.4	91.0	1,344.5	6.8	52.1
July	1,257.1	82.4	1,339.5	6.2	51.9	1,257.1	89.9	1,347.0	6.7	52.2
August	1,257.3	93.1	1,350.4	6.9	52.2	1,261.2	88.5	1,349.7	6.6	52.2
September	1,264.4	96.1	1,360.5	7.1	52.6	1,265.8	86.8	1,352.5	6.4	52.3
October	1,277.9	79.8	1,357.7	5.9	52.4	1,270.7	84.9	1,355.6	6.3	52.3
November	1,274.1	79.9	1,354.0	5.9	52.2	1,276.7	82.9	1,359.7	6.1	52.4
December	1,283.2	81.7	1,364.9	6.0	52.5	1,284.1	81.3	1,365.5	6.0	52.6
2000—										
January	1,288.0	78.0	1,366.0	5.7	52.5	1,292.6	80.6	1,373.2	5.9	52.8
February	1,302.6	83.1	1,385.7	6.0	53.2	1,301.7	80.9	1,382.6	5.9	53.1
March	1,312.3	83.7	1,396.0	6.0	53.6	1,310.9	81.5	1,392.4	5.9	53.4
April	1,322.7	79.0	1,401.7	5.6	53.7	1,319.3	82.2	1,401.5	5.9	53.7
May	1,329.3	84.2	1,413.5	6.0	54.1	1,326.9	82.6	1,409.4	5.9	54.0
PERSONS										
May—										
1996	2,789.5	236.4	3,025.9	7.8	62.2	2,790.2	240.0	3,030.2	7.9	62.3
1997	2,809.9	248.2	3,058.1	8.1	62.0	2,808.1	243.0	3,051.1	8.0	61.9
1998	2,846.0	230.4	3,076.4	7.5	61.6	2,854.9	228.4	3,083.3	7.4	61.7
1999—										
March	2,904.2	219.6	3,123.8	7.0	61.8	2,903.8	212.1	3,115.9	6.8	61.7
April	2,903.2	212.7	3,116.0	6.8	61.6	2,911.2	208.7	3,119.9	6.7	61.7
May	2,920.5	203.8	3,124.3	6.5	61.7	2,918.4	206.5	3,124.9	6.6	61.7
June	2,926.9	201.6	3,128.4	6.4	61.7	2,925.8	205.0	3,130.8	6.5	61.7
July	2,938.2	192.1	3,130.3	6.1	61.6	2,934.1	203.2	3,137.3	6.5	61.8
August	2,936.1	208.2	3,144.3	6.6	61.8	2,942.1	201.4	3,143.6	6.4	61.8
September	2,948.9	217.8	3,166.7	6.9	62.2	2,949.5	199.2	3,148.8	6.3	61.8
October	2,967.0	190.0	3,157.0	6.0	61.9	2,956.3	196.7	3,152.9	6.2	61.8
November	2,960.5	176.9	3,137.4	5.6	61.5	2,963.6	193.7	3,157.3	6.1	61.8
December	2,971.5	199.9	3,171.5	6.3	62.0	2,973.3	191.0	3,164.2	6.0	61.9
2000—										
January	2,974.0	189.5	3,163.4	6.0	61.8	2,985.8	189.1	3,174.9	6.0	62.0
February	3,004.5	186.4	3,190.8	5.8	62.3	3,000.5	188.3	3,188.8	5.9	62.2
March	3,013.9	193.3	3,207.2	6.0	62.5	3,016.2	187.6	3,203.8	5.9	62.4
April	3,038.2	181.8	3,220.0	5.6	62.7	3,031.2	186.9	3,218.1	5.8	62.7
May	3,053.4	185.1	3,238.5	5.7	63.0	3,044.9	186.0	3,230.9	5.8	62.9

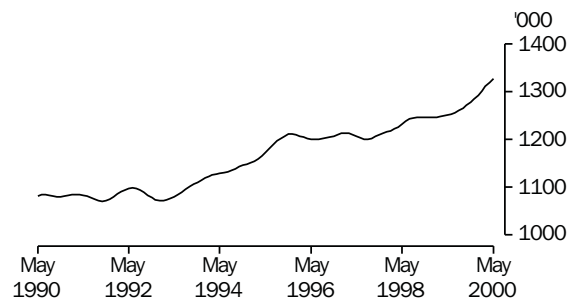
(a) See Explanatory Notes 29 and 30.

TREND SERIES, NSW(a)

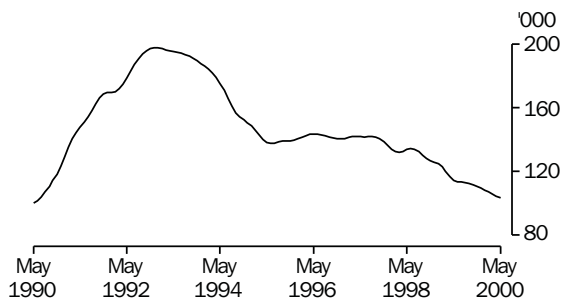
EMPLOYED MALES



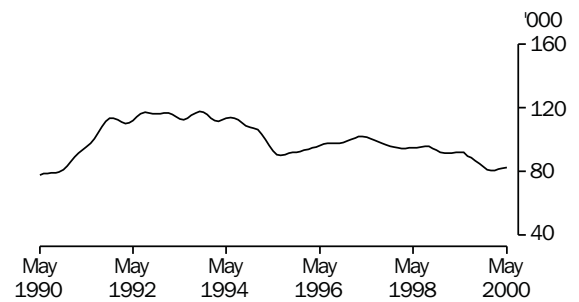
EMPLOYED FEMALES



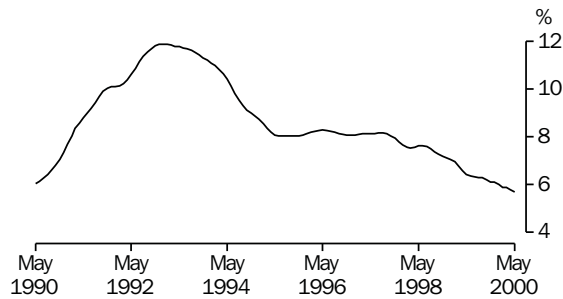
UNEMPLOYED MALES



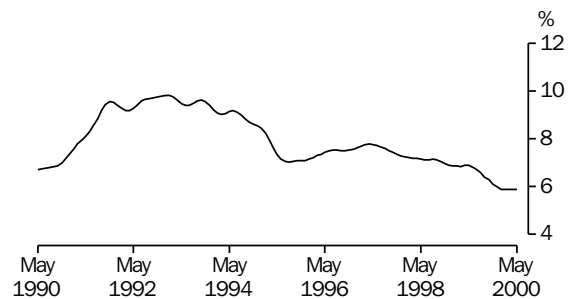
UNEMPLOYED FEMALES



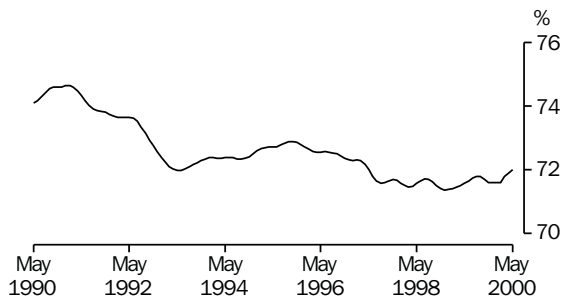
MALE UNEMPLOYMENT RATE



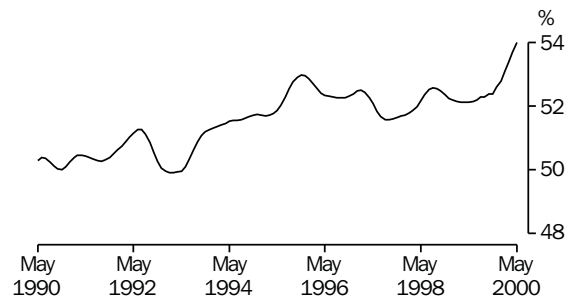
FEMALE UNEMPLOYMENT RATE



MALE PARTICIPATION RATE



FEMALE PARTICIPATION RATE



(a) Comparisons between these graphs should not be made, as their vertical axes are not similarly scaled.

**TABLE 3. LABOUR FORCE STATUS: AGE, NSW, MAY 2000**

Age group (years)	Employed			Unemployed			Labour force ( <i>'000</i> )	Not in labour force ( <i>'000</i> )	Civilian population aged 15 and over ( <i>'000</i> )	Unemp- loyment rate (per cent)	Partici- pation rate (per cent)
	Full-time workers ( <i>'000</i> )	Part-time workers ( <i>'000</i> )	Total ( <i>'000</i> )	Looking for full- time work ( <i>'000</i> )	Looking for part- time work ( <i>'000</i> )	Total ( <i>'000</i> )					
<b>MALES</b>											
15-19	50.5	57.6	108.1	8.9	10.8	19.7	127.8	100.3	228.1	15.4	56.0
20-24	145.0	31.7	176.7	15.0	* 1.5	16.5	193.2	32.6	225.8	8.5	85.5
25-34	392.0	34.2	426.2	17.5	* 1.8	19.3	445.5	38.2	483.7	4.3	92.1
35-44	406.0	26.5	432.5	20.9	* 1.1	22.0	454.5	41.8	496.3	4.8	91.6
45-54	343.6	23.7	367.2	11.0	* 2.6	13.6	380.9	55.5	436.3	3.6	87.3
55-59	100.6	13.3	114.0	* 4.7	* 0.7	* 5.4	119.4	45.9	165.3	* 4.5	72.2
60-64	44.5	13.0	57.5	* 1.7	* 0.0	* 1.7	59.2	75.4	134.6	* 2.9	44.0
65 and over	22.0	15.2	37.2	* 0.0	* 0.0	* 0.0	37.2	323.8	361.1	* 0.0	10.3
<b>Total</b>	<b>1,504.2</b>	<b>215.2</b>	<b>1,719.5</b>	<b>79.7</b>	<b>18.5</b>	<b>98.2</b>	<b>1,817.7</b>	<b>713.5</b>	<b>2,531.1</b>	<b>5.4</b>	<b>71.8</b>
<b>MARRIED FEMALES</b>											
15-19	* 1.1	* 0.4	* 1.5	* 1.1	* 0.4	* 1.5	* 3.0	* 2.8	* 5.8	* 51.3	* 52.0
20-24	28.7	9.3	38.0	* 2.8	* 1.1	* 3.9	41.9	14.6	56.5	* 9.3	74.2
25-34	124.9	80.4	205.3	7.3	* 2.7	10.0	215.2	113.2	328.4	4.6	65.5
35-44	134.7	126.1	260.7	7.8	* 5.4	13.2	273.9	108.7	382.7	4.8	71.6
45-54	131.3	88.5	219.8	* 1.0	* 3.3	* 4.4	224.1	103.1	327.2	* 1.9	68.5
55-59	24.6	26.9	51.5	* 0.0	* 0.4	* 0.4	51.8	63.0	114.8	* 0.7	45.2
60-64	7.1	8.2	15.3	* 0.0	* 0.0	* 0.0	15.3	76.2	91.4	* 0.0	16.7
65 and over	* 3.9	* 5.8	9.8	* 0.0	* 0.0	* 0.0	9.8	177.7	187.5	* 0.0	5.2
<b>Total</b>	<b>456.1</b>	<b>345.6</b>	<b>801.7</b>	<b>20.0</b>	<b>13.4</b>	<b>33.3</b>	<b>835.1</b>	<b>659.2</b>	<b>1,494.3</b>	<b>4.0</b>	<b>55.9</b>
<b>ALL FEMALES</b>											
15-19	27.9	83.2	111.1	8.5	9.0	17.5	128.6	88.5	217.2	13.6	59.2
20-24	112.3	44.8	157.1	12.1	* 5.1	17.2	174.3	45.7	220.0	9.9	79.2
25-34	223.6	101.8	325.4	14.5	* 3.4	17.9	343.2	147.4	490.6	5.2	70.0
35-44	188.9	148.8	337.7	11.9	7.7	19.6	357.3	138.6	495.9	5.5	72.0
45-54	177.9	105.9	283.8	* 4.7	* 4.6	9.3	293.1	135.3	428.4	3.2	68.4
55-59	38.5	34.9	73.4	* 1.1	* 0.4	* 1.5	74.9	85.3	160.2	* 2.0	46.7
60-64	10.9	13.3	24.3	* 0.3	* 0.4	* 0.7	24.9	109.2	134.1	* 2.7	18.6
65 and over	* 4.8	7.4	12.2	* 0.0	* 0.0	* 0.0	12.2	452.5	464.7	* 0.0	2.6
<b>Total</b>	<b>784.9</b>	<b>540.1</b>	<b>1,324.9</b>	<b>53.2</b>	<b>30.5</b>	<b>83.7</b>	<b>1,408.7</b>	<b>1,202.5</b>	<b>2,611.2</b>	<b>5.9</b>	<b>53.9</b>
<b>PERSONS</b>											
15-19	78.4	140.8	219.2	17.4	19.8	37.2	256.4	188.8	445.2	14.5	57.6
20-24	257.3	76.5	333.8	27.1	6.6	33.7	367.5	78.4	445.8	9.2	82.4
25-34	615.6	136.0	751.6	31.9	* 5.2	37.2	788.7	185.6	974.3	4.7	81.0
35-44	595.0	175.3	770.2	32.8	8.7	41.6	811.8	180.4	992.2	5.1	81.8
45-54	521.4	129.6	651.0	15.7	7.3	22.9	674.0	190.7	864.7	3.4	77.9
55-59	139.2	48.2	187.4	* 5.8	* 1.1	6.9	194.3	131.2	325.5	3.6	59.7
60-64	55.4	26.3	81.8	* 2.0	* 0.4	* 2.4	84.2	184.6	268.7	* 2.9	31.3
65 and over	26.9	22.6	49.4	* 0.0	* 0.0	* 0.0	49.4	776.3	825.8	* 0.0	6.0
<b>Total</b>	<b>2,289.1</b>	<b>755.3</b>	<b>3,044.4</b>	<b>132.8</b>	<b>49.1</b>	<b>181.9</b>	<b>3,226.3</b>	<b>1,916.0</b>	<b>5,142.3</b>	<b>5.6</b>	<b>62.7</b>



**TABLE 4. LABOUR FORCE STATUS: PERSONS AGED 15-24 BY FULL-TIME EDUCATIONAL ATTENDANCE, NSW, MAY 2000**

Age (years)	Employed			Unemployed			Labour force ('000)	Not in labour force ('000)	Civilian population aged 15 and over ('000)	Unemployment rate (per cent)	Participation rate (per cent)
	Full-time workers ('000)	Part-time workers ('000)	Total ('000)	Looking for full-time work ('000)	Looking for part-time work ('000)	Total ('000)					
<b>ATTENDING SCHOOL OR A TERTIARY EDUCATIONAL INSTITUTION FULL—TIME</b>											
15-19	* 1.7	109.7	111.4	* 2.7	18.7	21.4	132.8	169.9	302.6	16.1	43.9
15	* 0.0	24.8	24.8	* 0.7	7.4	8.0	32.8	52.5	85.3	24.5	38.5
16	* 0.0	23.9	23.9	* 0.7	* 5.1	* 5.7	29.7	44.8	74.4	* 19.3	39.8
17	* 0.6	25.5	26.0	* 1.0	* 2.0	* 3.0	29.1	41.0	70.0	* 10.4	41.5
18	* 0.8	19.2	19.9	* 0.0	* 3.1	* 3.1	23.0	15.9	38.9	* 13.5	59.2
19	* 0.3	16.3	16.7	* 0.3	* 1.2	* 1.5	18.2	15.7	33.9	* 8.3	53.6
20-24	* 2.3	36.0	38.3	* 1.0	* 4.0	* 5.0	43.4	40.4	83.7	* 11.6	51.8
20	* 0.7	13.4	14.1	* 0.0	* 1.1	* 1.1	15.2	11.1	26.2	* 7.1	57.8
21	* 0.3	9.9	10.2	* 0.7	* 1.4	* 2.1	12.3	8.7	21.0	* 17.2	58.7
22	* 0.7	* 5.3	6.0	* 0.3	* 0.7	* 1.0	7.0	9.4	16.4	* 13.8	42.5
23	* 0.6	* 4.0	* 4.6	* 0.0	* 0.5	* 0.5	* 5.0	* 5.6	10.7	* 9.1	* 47.3
24	* 0.0	* 3.4	* 3.4	* 0.0	* 0.4	* 0.4	* 3.9	* 5.6	9.4	* 11.1	* 40.9
<b>Total aged 15-24</b>	<b>* 4.0</b>	<b>145.7</b>	<b>149.7</b>	<b>* 3.7</b>	<b>22.8</b>	<b>26.4</b>	<b>176.1</b>	<b>210.2</b>	<b>386.4</b>	<b>15.0</b>	<b>45.6</b>
<b>NOT ATTENDING SCHOOL OR A TERTIARY EDUCATIONAL INSTITUTION FULL-TIME (a)</b>											
15-19	76.7	31.1	107.8	14.8	* 1.1	15.8	123.7	18.9	142.6	12.8	86.7
15	* 1.1	* 0.3	* 1.4	* 0.6	* 0.0	* 0.6	* 2.0	* 0.8	* 2.8	* 31.0	* 70.4
16	7.5	* 2.2	9.8	* 1.8	* 0.0	* 1.8	11.6	* 2.5	14.1	* 15.8	82.0
17	9.5	* 4.9	14.4	* 1.3	* 0.7	* 1.9	16.3	* 3.3	19.6	* 11.7	83.1
18	24.6	11.5	36.1	7.8	* 0.0	7.8	43.8	6.5	50.3	17.7	87.1
19	34.0	12.3	46.2	* 3.3	* 0.4	* 3.7	49.9	* 5.7	55.6	* 7.4	89.8
20-24	255.0	40.5	295.5	26.1	* 2.5	28.7	324.1	38.0	362.1	8.8	89.5
20	42.2	7.4	49.6	* 5.6	* 0.7	6.2	55.8	6.5	62.3	11.1	89.6
21	47.1	9.1	56.2	* 4.2	* 1.4	* 5.6	61.8	* 5.7	67.6	* 9.1	91.5
22	53.1	7.1	60.1	* 4.5	* 0.0	* 4.5	64.6	7.1	71.7	* 6.9	90.1
23	55.9	7.1	63.0	6.9	* 0.0	6.9	69.9	8.8	78.7	9.8	88.8
24	56.7	9.8	66.5	* 5.0	* 0.4	* 5.5	72.0	9.9	81.9	* 7.6	87.9
<b>Total aged 15-24</b>	<b>331.7</b>	<b>71.6</b>	<b>403.3</b>	<b>40.9</b>	<b>* 3.6</b>	<b>44.5</b>	<b>447.8</b>	<b>56.9</b>	<b>504.7</b>	<b>9.9</b>	<b>88.7</b>
<b>TOTAL</b>											
15-19	78.4	140.8	219.2	17.4	19.8	37.2	256.4	188.8	445.2	14.5	57.6
15	* 1.1	25.1	26.2	* 1.3	7.4	8.7	34.8	53.4	88.2	24.8	39.5
16	7.5	26.2	33.7	* 2.5	* 5.1	7.6	41.2	47.3	88.6	18.3	46.6
17	10.1	30.4	40.4	* 2.2	* 2.7	* 4.9	45.4	44.3	89.6	* 10.9	50.6
18	25.4	30.6	56.0	7.8	* 3.1	10.9	66.9	22.4	89.3	16.2	74.9
19	34.3	28.6	62.9	* 3.6	* 1.6	* 5.2	68.1	21.4	89.5	* 7.6	76.1
20-24	257.3	76.5	333.8	27.1	6.6	33.7	367.5	78.4	445.8	9.2	82.4
20	42.9	20.9	63.7	* 5.6	* 1.7	7.3	71.0	17.5	88.5	10.3	80.2
21	47.4	19.0	66.4	* 4.9	* 2.8	7.8	74.2	14.4	88.6	10.5	83.7
22	53.8	12.4	66.1	* 4.7	* 0.7	* 5.4	71.6	16.5	88.1	* 7.6	81.3
23	56.5	11.1	67.6	6.9	* 0.5	7.3	74.9	14.5	89.4	9.8	83.8
24	56.7	13.2	69.9	* 5.0	* 0.9	5.9	75.8	15.5	91.3	7.8	83.0
<b>Total aged 15-24</b>	<b>335.7</b>	<b>217.3</b>	<b>553.0</b>	<b>44.5</b>	<b>26.4</b>	<b>70.9</b>	<b>623.9</b>	<b>267.2</b>	<b>891.1</b>	<b>11.4</b>	<b>70.0</b>

(a) Includes institutionalised persons.

**TABLE 5. LABOUR FORCE STATUS: FAMILY STATUS, NSW, MAY 2000**

Family status	Employed			Unemployed			Labour force	Not in labour force	Civilian population aged 15 and over	Unemployment rate (per cent)	Participation rate (per cent)
	Full-time workers ('000)	Part-time workers ('000)	Total ('000)	Looking for full-time work ('000)	Looking for part-time work ('000)	Total ('000)					
<i>Member of a family</i>	1,832.4	664.2	2,496.6	101.6	42.3	143.9	2,640.5	1,380.3	4,020.7	5.4	65.7
Husband	975.9	91.6	1,067.5	31.1	* 3.1	34.2	1,101.7	366.5	1,468.2	3.1	75.0
With children aged 0-14 present	510.5	33.6	544.0	18.2	* 1.4	19.5	563.6	39.8	603.4	3.5	93.4
Without children aged 0-14 present	465.4	58.0	523.4	13.0	* 1.7	14.7	538.1	326.7	864.9	2.7	62.2
With dependants present	589.4	39.8	629.2	19.9	* 1.7	21.6	650.8	50.9	701.7	3.3	92.7
Without dependants present	386.4	51.8	438.2	11.3	* 1.4	12.7	450.9	315.6	766.5	2.8	58.8
Wife	434.6	339.2	773.8	19.3	12.7	32.0	805.8	626.4	1,432.2	4.0	56.3
With children aged 0-14 present	150.0	192.2	342.2	11.3	8.9	20.3	362.4	223.6	586.0	5.6	61.9
Without children aged 0-14 present	284.7	146.9	431.6	8.0	* 3.8	11.7	443.4	402.8	846.2	2.6	52.4
With dependants present	190.6	218.8	409.3	12.8	10.9	23.7	433.1	251.1	684.1	5.5	63.3
Without dependants present	244.1	120.4	364.5	6.5	* 1.8	8.3	372.7	375.3	748.0	2.2	49.8
Not-married male family head	24.6	* 2.8	27.4	* 3.1	* 0.3	* 3.4	30.8	14.9	45.7	* 11.1	67.4
With children aged 0-14 present	6.7	* 1.0	7.7	* 2.3	* 0.3	* 2.7	10.4	* 3.2	13.5	* 25.6	76.6
Without children aged 0-14 present	18.0	* 1.7	19.7	* 0.8	* 0.0	* 0.8	20.5	11.8	32.2	* 3.8	63.5
With dependants present	10.8	* 1.0	11.9	* 2.7	* 0.3	* 3.0	14.9	* 5.7	20.6	* 20.3	72.3
Without dependants present	13.8	* 1.7	15.5	* 0.4	* 0.0	* 0.4	15.9	9.2	25.1	* 2.5	63.4
Not-married female family head	57.1	42.8	99.9	9.3	* 4.2	13.5	113.4	107.3	220.7	11.9	51.4
With children aged 0-14 present	27.8	32.6	60.4	6.1	* 3.1	9.2	69.6	58.9	128.5	13.3	54.2
Without children aged 0-14 present	29.3	10.2	39.5	* 3.2	* 1.1	* 4.3	43.8	48.4	92.2	* 9.8	47.5
With dependants present	39.4	38.0	77.4	7.4	* 4.2	11.6	89.0	63.9	152.9	13.1	58.2
Without dependants present	17.7	* 4.8	22.5	* 1.9	* 0.0	* 1.9	24.4	43.4	67.8	* 7.7	35.9
Full-time student aged 15-24 (a)	* 3.3	122.6	125.9	* 2.8	19.5	22.3	148.2	166.2	314.4	15.0	47.1
Other child of family head	305.7	58.9	364.6	32.8	* 2.3	35.1	399.8	53.4	453.2	8.8	88.2
Other relative of family head	31.2	6.3	37.5	* 3.2	* 0.0	* 3.2	40.8	45.5	86.3	* 7.9	47.2
<i>Not a member of a family</i>	374.7	68.7	443.4	24.0	* 4.4	28.4	471.8	365.5	837.3	6.0	56.4
Living alone	199.6	36.9	236.5	11.3	* 3.0	14.4	250.9	317.3	568.2	5.7	44.2
Not living alone	175.1	31.9	206.9	12.7	* 1.4	14.1	221.0	48.1	269.1	6.4	82.1
<i>Not family coded</i>	82.1	22.3	104.4	7.2	* 2.4	9.6	114.0	170.3	284.3	8.4	40.1
<b>Total</b>	<b>2,289.1</b>	<b>755.3</b>	<b>3,044.4</b>	<b>132.8</b>	<b>49.1</b>	<b>181.9</b>	<b>3,226.3</b>	<b>1,916.0</b>	<b>5,142.3</b>	<b>5.6</b>	<b>62.7</b>

(a) Excludes persons aged 20-24 attending school.

**TABLE 6. EMPLOYED PERSONS: STATUS IN EMPLOYMENT (a), NSW ('000)**

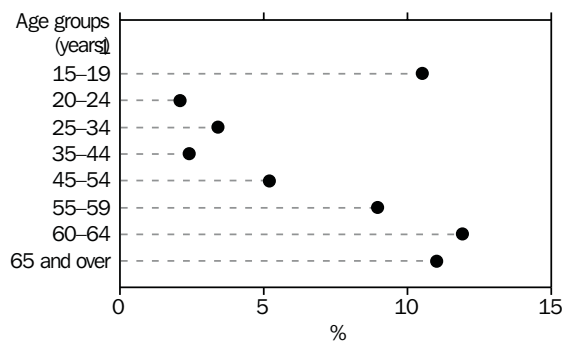
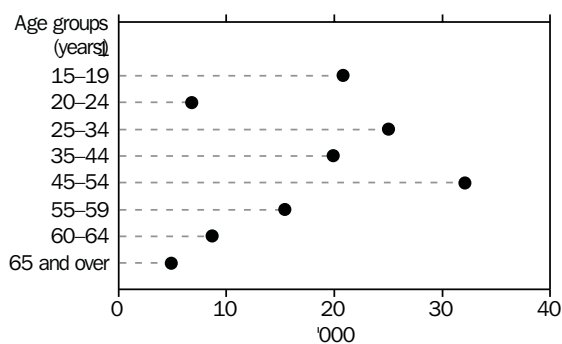
Status in employment	Males			Females			Persons		
	May 1999	February 2000	May 2000	May 1999	February 2000	May 2000	May 1999	February 2000	May 2000
Employees	1,399.7	1,426.9	1,454.2	1,132.3	1,145.0	1,204.8	2,532.0	2,571.9	2,658.9
Employers	74.9	75.3	75.5	33.7	34.4	29.6	108.6	109.7	105.2
Own account workers	179.5	184.6	183.2	71.0	89.1	79.2	250.5	273.6	262.4
<b>Total employed (b)</b>	<b>1,662.7</b>	<b>1,694.0</b>	<b>1,719.5</b>	<b>1,250.2</b>	<b>1,282.3</b>	<b>1,324.9</b>	<b>2,912.9</b>	<b>2,976.3</b>	<b>3,044.4</b>

(a) Status in Employment replaces the previous term Status of Worker. No definitional changes have been made - the only changes are to the classification titles. (b) Includes contributing family workers.

**TABLE 7. EMPLOYED PERSONS: AGE, NSW  
(\*000)**

Month	Age group (years)								Total employed
	15-19	20-24	25-34	35-44	45-54	55-59	60-64	65 and over	
<b>MALES</b>									
<i>1999—</i>									
May	102.8	174.2	413.9	425.2	353.2	106.3	55.3	31.8	1,662.7
<i>2000—</i>									
February	108.6	175.1	418.8	431.1	358.4	109.3	57.1	35.6	1,694.0
March	108.7	176.9	417.1	432.2	365.6	110.2	54.5	36.6	1,701.8
April	112.8	176.1	426.6	432.3	364.8	112.6	55.1	36.3	1,716.6
May	108.1	176.7	426.2	432.5	367.2	114.0	57.5	37.2	1,719.5
<b>MARRIED FEMALES</b>									
<i>1999—</i>									
May	* 3.0	30.0	183.0	248.2	201.2	48.5	14.0	7.1	735.0
<i>2000—</i>									
February	* 1.4	40.1	194.0	247.6	219.0	50.0	18.7	9.5	780.3
March	* 1.0	40.7	197.1	254.5	222.4	50.9	16.6	10.9	794.1
April	* 1.4	39.2	204.4	258.9	219.3	52.2	16.5	8.3	800.2
May	* 1.5	38.0	205.3	260.7	219.8	51.5	15.3	9.8	801.7
<b>ALL FEMALES</b>									
<i>1999—</i>									
May	95.7	152.8	312.7	327.1	265.8	65.6	17.9	12.8	1,250.2
<i>2000—</i>									
February	105.0	148.0	314.1	322.4	281.7	72.2	24.7	14.1	1,282.3
March	110.2	151.8	321.4	325.4	285.6	72.4	26.0	14.9	1,307.8
April	106.2	153.5	326.0	335.0	285.4	74.4	26.1	12.1	1,318.7
May	111.1	157.1	325.4	337.7	283.8	73.4	24.3	12.2	1,324.9
<b>PERSONS</b>									
<i>1999—</i>									
May	198.4	327.0	726.6	752.3	618.9	172.0	73.1	44.5	2,912.9
<i>2000—</i>									
February	213.6	323.1	733.0	753.5	640.2	181.5	81.8	49.7	2,976.3
March	219.0	328.7	738.4	757.6	651.3	182.7	80.5	51.4	3,009.6
April	219.0	329.6	752.6	767.3	650.2	187.0	81.2	48.5	3,035.3
May	219.2	333.8	751.6	770.2	651.0	187.4	81.8	49.4	3,044.4

**ANNUAL CHANGE IN EMPLOYMENT BY AGE, NSW MAY 1999 TO MAY 2000**

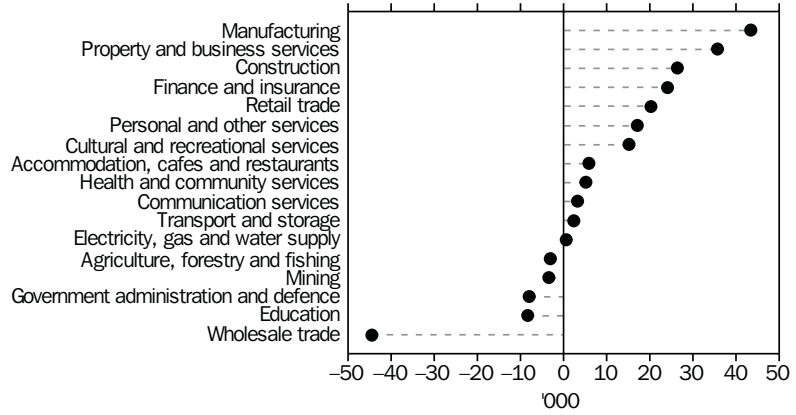


**TABLE 8. EMPLOYED PERSONS: INDUSTRY, NSW  
(’000)**

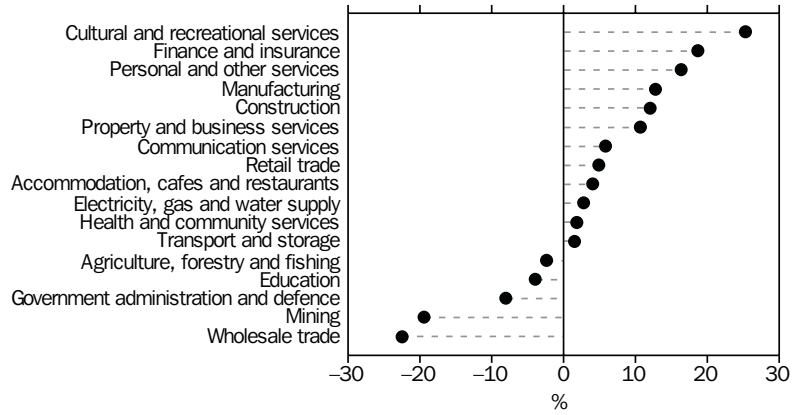
<i>Industry division and subdivision</i>	<i>Males</i>		<i>Females</i>		<i>Persons</i>	
	<i>May 1999</i>	<i>May 2000</i>	<i>May 1999</i>	<i>May 2000</i>	<i>May 1999</i>	<i>May 2000</i>
<i>Agriculture, forestry and fishing</i>	91.3	89.8	36.3	34.6	127.6	124.5
Agriculture	77.4	77.3	32.6	32.3	110.0	109.6
Services to agriculture; hunting and trapping	8.9	7.6	* 1.6	* 2.0	10.5	9.6
Forestry and logging	* 3.0	* 2.2	* 1.7	* 0.0	* 4.7	* 2.2
Commercial fishing	* 2.1	* 2.7	* 0.3	* 0.3	* 2.4	* 3.1
<i>Mining</i>	16.5	14.1	* 1.0	* 0.0	17.5	14.1
Coal mining	11.1	10.0	* 0.0	* 0.0	11.1	10.0
Oil and gas extraction	* 0.0	* 0.0	* 0.0	* 0.0	* 0.0	* 0.0
Metal ore mining	* 2.5	* 2.1	* 0.3	* 0.0	* 2.8	* 2.1
Other mining	* 2.9	* 2.0	* 0.0	* 0.0	* 2.9	* 2.0
Services to mining	* 0.0	* 0.0	* 0.7	* 0.0	* 0.7	* 0.0
<i>Manufacturing</i>	250.6	275.4	90.8	109.4	341.4	384.8
Food, beverage and tobacco manufacturing	30.1	33.3	13.6	19.8	43.7	53.1
Textile, clothing, footwear and leather manufacturing	12.4	14.1	16.0	18.5	28.5	32.6
Wood and paper product manufacturing	15.2	20.8	* 5.4	* 4.1	20.6	24.9
Printing, publishing and recorded media	21.5	31.7	18.2	20.4	39.7	52.1
Petroleum, coal, chemical and associated product manufacturing	21.0	23.0	10.0	16.0	30.9	39.0
Non-metallic mineral product manufacturing	16.3	12.6	* 2.0	* 2.0	18.3	14.7
Metal product manufacturing	50.4	61.8	7.8	9.6	58.2	71.3
Machinery and equipment manufacturing	63.9	54.9	13.1	15.3	77.0	70.2
Other manufacturing	19.8	23.3	* 4.6	* 3.6	24.4	26.8
<i>Electricity, gas and water supply</i>	17.6	18.8	* 4.1	* 3.5	21.7	22.3
Electricity and gas supply	11.4	13.5	* 3.0	* 2.1	14.4	15.6
Water supply, sewerage and drainage services	6.2	* 5.4	* 1.1	* 1.4	7.3	6.7
<i>Construction</i>	194.2	219.1	24.6	26.1	218.9	245.2
General construction	67.0	74.5	11.5	8.5	78.4	83.0
Construction trade services	127.3	144.6	13.2	17.6	140.4	162.2
<i>Wholesale trade</i>	133.0	109.9	65.2	43.8	198.2	153.7
Basic material wholesaling	27.9	24.8	11.9	7.5	39.8	32.4
Machinery and motor vehicle wholesaling	62.6	47.2	24.3	13.7	86.9	60.9
Personal and household good wholesaling	42.5	37.9	29.0	22.5	71.5	60.4
<i>Retail trade</i>	211.1	212.3	204.6	223.7	415.8	436.0
Food retailing	75.6	79.6	86.0	93.9	161.6	173.5
Personal and household good retailing	66.4	66.2	102.1	111.2	168.4	177.3
Motor vehicle retailing and services	69.1	66.5	16.6	18.7	85.7	85.1
<i>Accommodation, cafes and restaurants</i>	67.4	65.3	76.4	84.2	143.7	149.5
<i>Transport and storage</i>	107.6	112.7	41.0	38.2	148.6	150.9
Road transport	60.1	55.8	10.9	13.0	71.0	68.7
Rail transport	12.1	13.9	* 3.4	* 3.8	15.5	17.7
Water transport	* 2.4	* 2.8	* 0.7	* 1.5	* 3.2	* 4.3
Air and Space transport	13.7	15.7	9.6	* 5.2	23.3	20.9
Other transport	* 0.7	* 0.0	* 0.4	* 0.0	* 1.0	* 0.0
Services to transport	13.3	14.7	15.0	12.7	28.3	27.4
Storage	* 5.3	9.8	* 1.0	* 2.0	6.3	11.8
<i>Communication services</i>	36.8	42.5	18.7	16.2	55.5	58.7
<i>Finance and insurance</i>	56.0	70.8	72.8	82.0	128.8	152.8
Finance	26.0	32.6	43.7	41.2	69.7	73.8
Insurance	12.1	12.6	13.5	18.9	25.6	31.5
Services to finance and insurance	17.9	25.6	15.6	21.9	33.5	47.5
<i>Property and business services</i>	192.9	208.3	141.1	161.4	334.0	369.7
Property services	24.5	25.9	14.8	18.1	39.3	44.0
Business services	168.4	182.5	126.3	143.3	294.7	325.7
<i>Government administration and defence</i>	58.6	56.3	41.6	35.9	100.2	92.2
Government administration	54.3	53.5	37.0	34.3	91.3	87.8
Defence	* 4.2	* 2.8	* 4.6	* 1.6	8.8	* 4.4
<i>Education</i>	72.8	62.6	140.9	142.6	213.7	205.3
<i>Health and community services</i>	69.9	57.4	212.4	230.0	282.3	287.4
Health services	55.1	46.7	163.3	172.9	218.4	219.6
Community services	14.8	10.7	49.1	57.0	63.9	67.7
<i>Cultural and recreational services</i>	32.3	38.6	27.8	36.6	60.1	75.3
Motion picture, radio and television services	8.0	11.4	8.6	10.5	16.6	21.9
Libraries, museums and the arts	11.2	9.5	10.9	11.6	22.1	21.1
Sport and recreation	13.1	17.7	8.2	14.6	21.4	32.3
<i>Personal and other services</i>	54.1	65.5	51.0	56.6	105.1	122.2
Personal services	20.2	28.9	27.6	39.9	47.9	68.8
Other services	33.5	36.7	21.6	16.7	55.1	53.4
Private households employing staff	* 0.3	* 0.0	* 1.7	* 0.0	* 2.1	* 0.0
<b>Total employed</b>	<b>1,662.7</b>	<b>1,719.5</b>	<b>1,250.2</b>	<b>1,324.9</b>	<b>2,912.9</b>	<b>3,044.4</b>

ANNUAL CHANGE IN EMPLOYMENT BY INDUSTRY DIVISION, NSW, MAY 1999 TO MAY 2000

NUMBER



PROPORTION

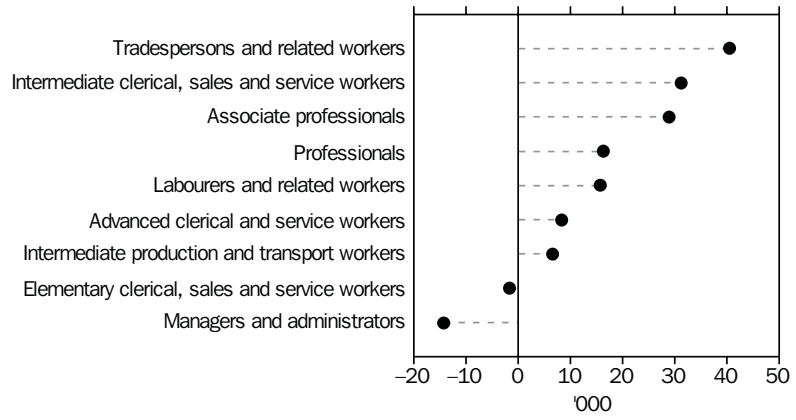


**TABLE 9. EMPLOYED PERSONS: OCCUPATION, NSW  
(<sup>'000</sup>)**

<i>Major and sub-major occupation group</i>	<i>Males</i>		<i>Females</i>		<i>Persons</i>	
	<i>May 1999</i>	<i>May 2000</i>	<i>May 1999</i>	<i>May 2000</i>	<i>May 1999</i>	<i>May 2000</i>
<i>Managers and administrators</i>	182.8	173.7	53.1	47.9	235.9	221.6
Generalist managers	45.7	46.0	* 5.4	* 5.1	51.1	51.1
Specialist managers	79.8	73.5	26.5	25.1	106.3	98.5
Farmers and farm managers	57.4	54.3	21.2	17.7	78.6	72.0
<i>Professionals</i>	291.9	292.8	272.6	287.9	564.5	580.7
Science, building and engineering professionals	49.2	45.1	7.8	9.3	57.1	54.4
Business and information professionals	108.7	120.7	64.8	63.7	173.5	184.4
Health professionals	33.0	28.2	68.6	80.2	101.6	108.4
Education professionals	47.4	39.4	88.4	84.5	135.8	123.8
Social, arts and miscellaneous professionals	53.6	59.5	43.0	50.1	96.6	109.7
<i>Associate professionals</i>	195.9	210.8	99.9	113.9	295.8	324.6
Science, engineering and related associate professionals	35.4	37.5	8.3	8.7	43.7	46.2
Business and administrative associate professionals	54.3	65.6	39.8	49.9	94.1	115.5
Managing supervisors (sales and service)	81.3	85.2	32.1	40.9	113.3	126.1
Health and welfare associate professionals	* 5.1	* 3.5	12.1	8.5	17.2	12.0
Other associate professionals	19.8	19.0	7.6	* 5.9	27.5	24.9
<i>Tradespersons and related workers</i>	330.2	365.5	29.7	35.0	359.9	400.4
Mechanical and fabrication engineering tradespersons	63.4	71.1	* 0.3	* 0.6	63.7	71.7
Automotive tradespersons	42.5	40.5	* 0.0	* 0.0	42.5	40.5
Electrical and electronics tradespersons	59.7	64.5	* 1.6	* 2.1	61.2	66.6
Construction tradespersons	88.8	98.2	* 0.4	* 2.5	89.1	100.7
Food tradespersons	17.6	21.4	7.6	7.5	25.2	28.9
Skilled agricultural and horticultural workers	20.4	17.8	* 2.7	* 1.3	23.0	19.1
Other tradespersons and related workers	37.8	52.0	17.2	20.9	55.1	72.8
<i>Advanced clerical and service workers</i>	12.7	17.3	117.7	121.3	130.3	138.6
Secretaries and personal assistants	* 1.8	* 1.7	83.3	88.4	85.1	90.1
Other advanced clerical and service workers	10.9	15.6	34.3	32.9	45.2	48.5
<i>Intermediate clerical, sales and service workers</i>	157.1	163.2	372.5	397.6	529.6	560.8
Intermediate clerical workers	78.3	75.5	241.7	255.2	320.0	330.7
Intermediate sales and related workers	41.2	43.0	13.2	17.6	54.4	60.5
Intermediate service workers	37.6	44.7	117.6	124.8	155.2	169.6
<i>Intermediate production and transport workers</i>	226.2	225.1	30.7	38.4	256.9	263.5
Intermediate plant operators	46.4	57.1	* 1.0	* 2.7	47.4	59.8
Intermediate machine operators	15.5	19.4	9.9	14.1	25.4	33.5
Road and rail transport drivers	100.8	87.9	6.6	* 5.7	107.4	93.6
Other intermediate production and transport workers	63.4	60.8	13.2	15.8	76.6	76.6
<i>Elementary clerical, sales and service workers</i>	97.4	90.2	182.1	187.6	279.5	277.8
Elementary clerks	12.6	9.9	18.5	14.9	31.1	24.8
Elementary sales workers	64.5	61.3	153.8	159.8	218.4	221.1
Elementary service workers	20.3	19.0	9.8	12.9	30.0	31.9
<i>Labourers and related workers</i>	168.4	180.8	92.1	95.4	260.5	276.2
Cleaners	28.8	31.3	37.7	35.1	66.5	66.4
Factory labourers	41.2	43.8	26.5	26.4	67.7	70.2
Other labourers and related workers	98.5	105.7	27.8	33.9	126.3	139.6
<b>Total employed</b>	<b>1,662.7</b>	<b>1,719.5</b>	<b>1,250.2</b>	<b>1,324.9</b>	<b>2,912.9</b>	<b>3,044.4</b>

ANNUAL CHANGE IN EMPLOYMENT BY OCCUPATION GROUP, NSW, MAY 1999 TO MAY 2000

NUMBER



PROPORTION



**TABLE 10. UNEMPLOYED PERSONS: AGE, NSW  
(’000)**

Month	Age group (years)						Total unemployed
	15-19	20-24	25-34	35-44	45-54	55 and over	
<b>MALES</b>							
1999—							
May	21.1	17.0	27.9	19.5	16.2	8.5	110.1
2000—							
February	24.2	22.6	24.5	23.0	12.4	7.1	113.8
March	21.2	17.7	26.2	26.1	13.8	9.1	114.1
April	18.4	15.8	19.9	23.2	15.6	7.6	100.5
May	19.7	16.5	19.3	22.0	13.6	7.1	98.2
<b>FEMALES</b>							
1999—							
May	19.7	14.9	19.9	18.4	14.1	* 3.0	90.0
2000—							
February	22.1	18.9	21.8	20.4	11.0	* 4.0	98.2
March	18.1	18.5	21.2	19.7	11.4	* 3.5	92.4
April	18.0	16.2	20.2	14.6	10.6	* 2.8	82.4
May	17.5	17.2	17.9	19.6	9.3	* 2.2	83.7
<b>PERSONS</b>							
1999—							
May	40.8	31.9	47.9	37.9	30.2	11.5	200.1
2000—							
February	46.3	41.5	46.2	43.5	23.3	11.1	212.0
March	39.2	36.2	47.4	45.9	25.2	12.6	206.5
April	36.4	32.0	40.1	37.8	26.1	10.5	182.9
May	37.2	33.7	37.2	41.6	22.9	9.3	181.9

**TABLE 11. UNEMPLOYED PERSONS: UNEMPLOYMENT RATE BY AGE, NSW  
(per cent)**

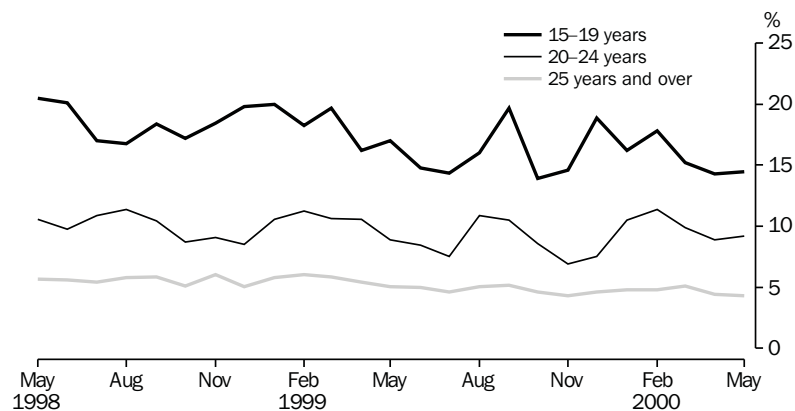
Month	Age group (years)						Total unemployment rate
	15-19	20-24	25-34	35-44	45-54	55 and over	
<b>MALES</b>							
1999—							
May	17.0	8.9	6.3	4.4	4.4	4.2	6.2
2000—							
February	18.2	11.4	5.5	5.1	3.3	3.4	6.3
March	16.3	9.1	5.9	5.7	3.6	4.3	6.3
April	14.0	8.2	4.5	5.1	4.1	3.6	5.5
May	15.4	8.5	4.3	4.8	3.6	3.3	5.4
<b>FEMALES</b>							
1999—							
May	17.1	8.9	6.0	5.3	5.0	* 3.0	6.7
2000—							
February	17.4	11.3	6.5	6.0	3.7	* 3.5	7.1
March	14.1	10.9	6.2	5.7	3.8	* 3.0	6.6
April	14.5	9.5	5.8	4.2	3.6	* 2.5	5.9
May	13.6	9.9	5.2	5.5	3.2	* 1.9	5.9
<b>PERSONS</b>							
1999—							
May	17.0	8.9	6.2	4.8	4.7	3.8	6.4
2000—							
February	17.8	11.4	5.9	5.5	3.5	3.4	6.6
March	15.2	9.9	6.0	5.7	3.7	3.8	6.4
April	14.3	8.9	5.1	4.7	3.9	3.2	5.7
May	14.5	9.2	4.7	5.1	3.4	2.8	5.6



**TABLE 12. UNEMPLOYED PERSONS: INDUSTRY AND OCCUPATION OF LAST FULL-TIME JOB, NSW, MAY 2000**  
(’000)

	Males	Females	Persons
<i>Had worked for two weeks or more in a full-time job in the last two years</i>	47.5	25.2	72.7
<b>Industry division—</b>			
Agriculture, forestry and fishing	* 4.0	* 0.7	* 4.7
Manufacturing	10.1	* 2.4	12.5
Construction	7.2	* 0.8	8.0
Wholesale trade	* 4.9	* 0.3	* 5.2
Retail trade	* 3.6	6.4	10.0
Accommodation, cafes and restaurants	* 4.1	* 2.7	6.8
Transport and storage	* 2.5	* 1.0	* 3.4
Finance and insurance	* 0.4	* 0.7	* 1.1
Property and business services	* 3.1	* 2.8	5.9
Education	* 1.1	* 1.5	* 2.6
Health and community services	* 0.6	* 3.5	* 4.1
Cultural and recreational services	* 0.7	* 0.6	* 1.4
Personal and other services	* 1.5	* 0.4	* 1.8
Other industries	* 3.8	* 1.3	* 5.1
<b>Major occupation group—</b>			
Managers and administrators	* 2.2	* 0.7	* 2.9
Professionals	* 4.0	* 2.4	6.4
Associate professionals	* 2.7	* 2.1	* 4.8
Tradespersons and related workers	10.6	* 1.4	12.0
Advanced clerical and service workers	* 0.0	* 2.7	* 2.7
Intermediate clerical, sales and service workers	* 4.2	* 4.9	9.1
Intermediate production and transport workers	7.4	* 2.1	9.5
Elementary clerical, sales and service workers	* 3.3	* 5.5	8.7
Labourers and related workers	13.1	* 3.6	16.7
<i>Had not worked full-time for two weeks or more in the last two years</i>	49.3	56.2	105.5
Looking for first job	10.4	11.0	21.4
Had worked at some time in the past	39.0	45.1	84.1
<i>Stood down</i>	* 1.3	* 2.3	* 3.6
<b>Total unemployed</b>	<b>98.2</b>	<b>83.7</b>	<b>181.9</b>

UNEMPLOYMENT RATE BY AGE, NSW



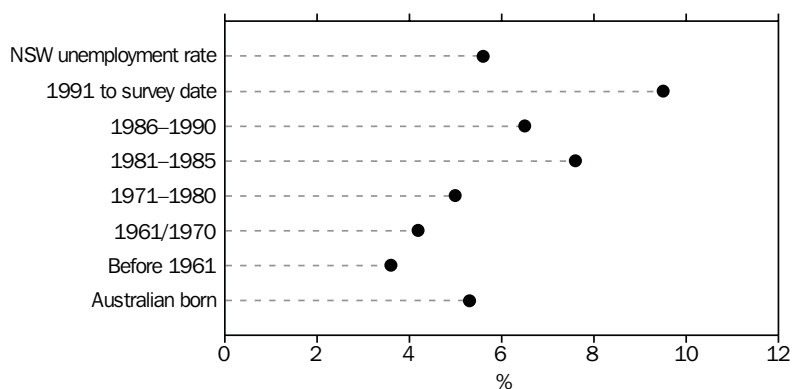
**TABLE 13. UNEMPLOYED PERSONS: DURATION OF UNEMPLOYMENT, NSW**

Duration of unemployment (weeks)	Males		Females		Persons				
	May 1999	May 2000	May 1999	May 2000	May 1999	February 2000	March 2000	April 2000	May 2000
	— '000 —								
Under 52	70.3	63.4	68.0	62.3	138.3	155.1	150.2	125.6	125.7
Under 2	* 4.6	6.7	7.1	8.3	11.7	21.8	23.9	15.4	15.0
2 and under 4	10.5	7.4	9.0	7.9	19.5	25.9	19.6	18.5	15.3
4 and under 8	13.8	10.5	11.1	8.3	24.9	32.3	31.0	23.1	18.8
8 and under 13	6.1	10.3	11.6	8.5	17.7	27.3	29.5	19.2	18.9
13 and under 26	20.7	16.7	16.7	20.5	37.3	25.6	22.4	31.1	37.2
26 and under 39	10.4	8.3	9.5	* 5.6	19.9	16.4	19.9	10.4	13.9
39 and under 52	* 4.3	* 3.4	* 3.0	* 3.2	7.3	* 5.9	* 3.8	7.8	6.6
52 and over	39.9	34.8	22.0	21.4	61.9	56.9	56.3	57.3	56.2
52 and under 104	13.2	11.9	10.6	9.7	23.8	16.3	23.1	20.2	21.6
104 and over	26.7	22.9	11.4	11.7	38.1	40.6	33.1	37.1	34.6
<b>Total unemployed</b>	<b>110.1</b>	<b>98.2</b>	<b>90.0</b>	<b>83.7</b>	<b>200.1</b>	<b>212.0</b>	<b>206.5</b>	<b>182.9</b>	<b>181.9</b>
	— Weeks —								
Average	65.9	63.2	44.2	47.6	56.1	50.1	48.2	54.0	56.0
Median	24	22	16	16	19	12	12	16	18

**TABLE 14. UNEMPLOYED PERSONS: UNEMPLOYMENT RATE BY BIRTHPLACE AND PERIOD OF ARRIVAL, NSW (per cent)**

	May 1999	February 2000	March 2000	April 2000	May 2000
Birthplace—					
Australia	6.1	6.9	6.3	5.6	5.3
Outside Australia	7.2	5.9	6.8	6.0	6.5
Main English speaking countries	4.3	5.4	4.3	3.7	5.3
Other countries	8.6	6.2	8.0	7.2	7.1
Period of arrival of overseas born—					
Before 1961	* 3.3	* 4.3	* 2.4	* 3.0	* 3.6
1961-1970	* 4.4	* 3.1	4.4	* 3.2	* 4.2
1971-1980	6.6	5.1	5.3	6.1	5.0
1981-1985	7.1	6.3	7.3	7.6	7.6
1986-1990	8.0	6.7	8.4	4.7	6.5
1991 to survey date	10.9	7.9	9.5	8.7	9.5
<b>Total unemployment rate</b>	<b>6.4</b>	<b>6.6</b>	<b>6.4</b>	<b>5.7</b>	<b>5.6</b>

**UNEMPLOYMENT RATE BY PERIOD OF ARRIVAL OF OVERSEAS BORN, NSW—MAY 2000**



**TABLE 15. UNEMPLOYED PERSONS: DURATION OF UNEMPLOYMENT BY AGE, NSW**

Month	Duration of unemployment (weeks)					Total unemployed persons ('000)	Average duration (weeks)	Median duration (weeks)
	Under 13 ('000)	13 and under 26 ('000)	26 and under 39 ('000)	39 and under 104 ('000)	104 and over ('000)			
15 19								
1999—								
May	22.7	10.7	* 3.6	* 3.7	* 0.0	40.8	14.7	8
2000—								
March	26.0	* 4.9	* 1.8	* 5.3	* 1.2	39.2	19.3	8
April	18.0	10.0	* 1.6	* 5.6	* 1.1	36.4	21.5	13
May	16.3	9.2	* 5.6	* 3.7	* 2.4	37.2	27.0	17
20 24								
1999—								
May	12.3	7.8	* 2.8	* 4.4	* 4.6	31.9	43.6	16
2000—								
March	21.1	* 4.3	* 3.7	* 2.6	* 4.7	36.2	31.1	9
April	17.7	* 4.6	* 2.2	* 3.3	* 4.3	32.0	30.4	10
May	13.5	8.9	* 2.1	* 4.6	* 4.6	33.7	34.8	13
25 34								
1999—								
May	15.9	8.7	* 5.0	8.5	9.6	47.9	61.5	23
2000—								
March	25.5	* 5.6	* 4.5	6.6	* 5.2	47.4	36.8	10
April	15.7	8.5	* 1.4	6.5	8.1	40.1	48.3	16
May	13.4	8.8	* 2.8	* 5.7	6.5	37.2	52.2	19
35 44								
1999—								
May	12.9	6.2	* 2.4	7.9	8.5	37.9	67.7	21
2000—								
March	19.5	* 3.2	6.5	6.7	9.8	45.9	61.9	26
April	13.4	* 5.3	* 2.9	5.9	10.3	37.8	73.2	26
May	14.4	6.6	* 2.7	8.2	9.6	41.6	75.4	24
45 AND OVER								
1999—								
May	9.9	* 3.9	6.0	6.5	15.4	41.7	89.5	50
2000—								
March	11.9	* 4.4	* 3.4	* 5.8	12.2	37.7	92.3	30
April	11.4	* 2.7	* 2.4	6.7	13.3	36.6	93.5	52
May	10.4	* 3.7	* 0.7	6.0	11.5	32.2	91.3	52
TOTAL								
1999—								
May	73.8	37.3	19.9	31.0	38.1	200.1	56.1	19
2000—								
March	104.1	22.4	19.9	27.0	33.1	206.5	48.2	12
April	76.3	31.1	10.4	28.0	37.1	182.9	54.0	16
May	68.0	37.2	13.9	28.2	34.6	181.9	56.0	18

**TABLE 16. LABOUR FORCE STATUS, SYDNEY (MSR)**

Month	Employed			Unemployed			Labour force ('000)	Unemployment rate (per cent)	Participation rate (per cent)
	Full-time workers ('000)	Part-time workers ('000)	Total ('000)	Looking for full-time work ('000)	Looking for part-time work ('000)	Total ('000)			
<b>MALES</b>									
May—									
1996	915.4	117.2	1,032.6	70.4	11.2	81.6	1,114.2	7.3	73.9
1997	929.1	120.8	1,049.9	68.9	9.8	78.8	1,128.7	7.0	73.7
1998	949.5	116.5	1,065.9	62.3	9.1	71.5	1,137.4	6.3	73.2
1999—									
March	966.4	127.6	1,094.0	54.3	12.5	66.8	1,160.8	5.8	73.8
April	970.3	123.1	1,093.4	46.3	10.7	57.0	1,150.4	5.0	73.0
May	966.1	128.8	1,094.9	47.4	9.9	57.2	1,152.1	5.0	73.0
2000—									
February	987.2	123.5	1,110.7	47.9	10.7	58.5	1,169.2	5.0	73.1
March	989.4	120.9	1,110.3	50.5	12.6	63.1	1,173.4	5.4	73.3
April	997.7	122.3	1,120.0	44.1	11.7	55.9	1,175.9	4.8	73.3
May	994.1	132.1	1,126.2	40.9	11.6	52.5	1,178.7	4.5	73.4
<b>MARRIED FEMALES</b>									
May—									
1996	259.1	190.0	449.1	15.2	8.9	24.1	473.2	5.1	53.9
1997	272.0	183.9	456.0	12.1	10.7	22.8	478.8	4.8	55.3
1998	266.2	203.6	469.8	15.5	7.7	23.2	493.0	4.7	55.5
1999—									
March	274.3	197.9	472.1	13.8	8.9	22.6	494.8	4.6	55.1
April	276.5	197.4	474.0	14.2	7.4	21.6	495.6	4.4	54.6
May	269.0	200.9	469.9	8.5	9.3	17.8	487.7	3.6	53.5
2000—									
February	301.3	199.5	500.9	13.6	9.7	23.4	524.2	4.5	56.1
March	302.5	201.1	503.6	12.8	8.6	21.4	525.0	4.1	56.6
April	313.8	201.7	515.5	12.1	6.0	18.1	533.6	3.4	57.2
May	315.1	204.6	519.7	10.9	7.3	18.2	537.8	3.4	57.7
<b>ALL FEMALES</b>									
May—									
1996	498.0	296.4	794.5	35.3	19.1	54.4	848.9	6.4	54.0
1997	512.4	300.1	812.5	36.7	20.4	57.1	869.6	6.6	54.4
1998	509.1	319.7	828.7	39.2	15.9	55.0	883.8	6.2	54.6
1999—									
March	532.3	305.3	837.5	33.3	26.9	60.2	897.7	6.7	54.8
April	530.4	307.4	837.8	36.1	20.5	56.6	894.3	6.3	54.5
May	524.2	316.0	840.2	28.8	19.1	47.9	888.1	5.4	54.1
2000—									
February	542.2	315.5	857.6	32.7	25.2	57.8	915.5	6.3	55.2
March	551.8	321.0	872.8	31.0	20.6	51.7	924.5	5.6	55.6
April	571.5	312.9	884.4	24.0	17.6	41.6	926.0	4.5	55.7
May	568.9	322.0	890.9	27.8	17.4	45.1	936.0	4.8	56.2
<b>PERSONS</b>									
May—									
1996	1,413.4	413.6	1,827.1	105.7	30.3	136.0	1,963.1	6.9	63.7
1997	1,441.6	420.9	1,862.4	105.6	30.2	135.9	1,998.3	6.8	63.9
1998	1,458.5	436.1	1,894.7	101.5	25.0	126.5	2,021.2	6.3	63.7
1999—									
March	1,498.7	432.8	1,931.5	87.6	39.4	127.0	2,058.5	6.2	64.1
April	1,500.7	430.5	1,931.2	82.4	31.2	113.6	2,044.8	5.6	63.6
May	1,490.2	444.9	1,935.1	76.2	28.9	105.1	2,040.2	5.2	63.4
2000—									
February	1,529.4	438.9	1,968.4	80.5	35.8	116.4	2,084.7	5.6	64.0
March	1,541.2	441.9	1,983.1	81.5	33.3	114.8	2,097.9	5.5	64.3
April	1,569.2	435.2	2,004.4	68.1	29.4	97.4	2,101.9	4.6	64.3
May	1,563.0	454.1	2,017.1	68.7	29.0	97.6	2,114.7	4.6	64.6

TABLE 17. LABOUR FORCE STATUS, BALANCE OF NSW (MSR)

Month	Employed			Unemployed			Labour force ('000)	Unemployment rate (per cent)	Participation rate (per cent)
	Full-time workers ('000)	Part-time workers ('000)	Total ('000)	Looking for full-time work ('000)	Looking for part-time work ('000)	Total ('000)			
MALES									
May—									
1996	493.2	66.7	559.9	47.3	7.3	54.6	614.6	8.9	69.8
1997	479.2	68.9	548.1	57.3	5.8	63.1	611.2	10.3	68.7
1998	485.9	64.5	550.4	52.3	8.3	60.6	611.0	9.9	67.8
1999—									
March	487.9	80.0	567.9	48.6	10.7	59.3	627.2	9.5	68.9
April	485.8	78.6	564.4	49.3	9.2	58.5	622.9	9.4	68.4
May	494.0	73.8	567.8	46.0	6.9	52.9	620.7	8.5	68.1
2000—									
February	516.3	67.0	583.3	47.9	7.4	55.3	638.6	8.7	69.3
March	504.8	86.7	591.5	43.0	8.0	51.0	642.5	7.9	69.6
April	507.1	89.5	596.6	37.7	6.9	44.6	641.2	7.0	69.4
May	510.1	83.2	593.3	38.8	6.9	45.7	638.9	7.1	69.1
MARRIED FEMALES									
May—									
1996	134.0	132.9	266.9	8.5	5.3	13.8	280.7	4.9	51.2
1997	129.3	128.6	257.9	10.3	6.0	16.3	274.2	5.9	50.7
1998	129.3	129.0	258.3	10.9	* 4.4	13.9	272.1	5.1	48.6
1999—									
March	126.1	132.6	258.7	10.3	* 5.3	15.6	274.3	5.7	49.8
April	122.9	134.4	257.4	8.4	* 4.1	12.6	269.9	4.7	48.9
May	130.2	134.9	265.1	10.1	* 4.3	14.4	279.5	5.2	50.7
2000—									
February	140.3	139.1	279.4	8.0	* 4.5	12.6	292.0	4.3	52.7
March	147.5	143.1	290.5	8.8	6.6	15.4	305.9	5.0	54.9
April	142.2	142.5	284.7	12.0	* 4.2	16.2	300.9	5.4	53.9
May	141.1	141.0	282.1	9.1	6.1	15.2	297.3	5.1	52.8
ALL FEMALES									
May—									
1996	206.8	194.8	401.6	26.5	13.7	40.2	441.8	9.1	48.8
1997	209.5	186.5	396.0	29.8	14.1	43.9	439.8	10.0	48.1
1998	201.2	194.2	395.4	29.0	9.7	38.7	434.1	8.9	46.9
1999—									
March	196.6	204.2	400.8	31.0	17.4	48.5	449.3	10.8	48.2
April	195.7	209.2	404.9	26.4	15.5	41.9	446.8	9.4	47.9
May	205.4	204.7	410.0	28.0	14.1	42.1	452.2	9.3	48.4
2000—									
February	213.5	211.1	424.6	24.3	16.0	40.4	465.0	8.7	49.3
March	219.4	215.6	435.0	26.0	14.8	40.7	475.7	8.6	50.4
April	219.7	214.6	434.3	28.1	12.8	40.9	475.1	8.6	50.3
May	216.0	218.1	434.1	25.4	13.2	38.6	472.7	8.2	50.0
PERSONS									
May—									
1996	700.0	261.5	961.6	73.8	21.0	94.8	1,056.4	9.0	59.1
1997	688.7	255.4	944.1	87.1	19.9	107.0	1,051.1	10.2	58.3
1998	687.0	258.8	945.8	81.3	18.0	99.3	1,045.1	9.5	57.2
1999—									
March	684.5	284.2	968.7	79.6	28.1	107.8	1,076.4	10.0	58.4
April	681.4	287.9	969.3	75.7	24.7	100.4	1,069.7	9.4	58.0
May	699.4	278.5	977.8	74.0	21.1	95.0	1,072.9	8.9	58.1
2000—									
February	729.8	278.1	1,007.9	72.2	23.4	95.6	1,103.6	8.7	59.2
March	724.2	302.3	1,026.5	68.9	22.8	91.7	1,118.2	8.2	59.9
April	726.8	304.1	1,030.9	65.8	19.7	85.5	1,116.3	7.7	59.7
May	726.1	301.2	1,027.3	64.2	20.1	84.3	1,111.6	7.6	59.4

**TABLE 18. EMPLOYED PERSONS: INDUSTRY AND OCCUPATION  
SYDNEY (MSR) AND BALANCE OF NSW (MSR), MAY 2000  
(\*000)**

<i>Industry division and Major occupation group</i>	<i>Males</i>	<i>Females</i>	<i>Persons</i>
<b>SYDNEY (MSR)</b>			
Industry—			
Agriculture, forestry and fishing	6.2	* 3.4	9.6
Mining	* 2.0	* 0.0	* 2.0
Manufacturing	176.7	84.6	261.3
Electricity, gas and water supply	11.0	* 3.1	14.2
Construction	146.7	18.1	164.8
Wholesale trade	83.3	36.1	119.4
Retail trade	126.3	133.3	259.6
Accommodation, cafes and restaurants	42.6	45.4	88.0
Transport and storage	80.7	32.6	113.4
Communication services	36.8	14.2	51.0
Finance and insurance	60.9	68.4	129.3
Property and business services	167.2	130.4	297.7
Government administration and defence	32.5	24.0	56.5
Education	38.5	88.5	126.9
Health and community services	43.2	144.3	187.5
Cultural and recreational services	26.5	27.7	54.2
Personal and other services	45.0	36.6	81.7
Occupation—			
Managers and administrators	96.7	25.5	122.2
Professionals	230.4	212.6	443.0
Associate professionals	138.0	80.5	218.5
Tradespersons and related workers	227.8	19.5	247.3
Advanced clerical and service workers	12.6	80.8	93.3
Intermediate clerical, sales and service workers	118.0	279.1	397.2
Intermediate production and transport workers	137.6	25.9	163.5
Elementary clerical, sales and service workers	61.8	112.3	174.2
Labourers and related workers	103.4	54.6	158.0
<b>Total employed</b>	<b>1,126.2</b>	<b>890.9</b>	<b>2,017.1</b>
<b>BALANCE OF NSW (MSR)</b>			
Industry—			
Agriculture, forestry and fishing	83.6	31.2	114.9
Mining	12.1	* 0.0	12.1
Manufacturing	98.6	24.8	123.4
Electricity, gas and water supply	7.8	* 0.3	8.1
Construction	72.4	8.0	80.4
Wholesale trade	26.6	7.7	34.3
Retail trade	86.0	90.4	176.4
Accommodation, cafes and restaurants	22.7	38.8	61.5
Transport and storage	32.0	* 5.5	37.5
Communication services	* 5.7	* 2.0	7.7
Finance and insurance	9.9	13.6	23.5
Property and business services	41.1	30.9	72.0
Government administration and defence	23.8	11.9	35.7
Education	24.2	54.2	78.3
Health and community services	14.2	85.7	99.9
Cultural and recreational services	12.1	8.9	21.1
Personal and other services	20.5	20.0	40.5
Occupation—			
Managers and administrators	77.1	22.4	99.4
Professionals	62.5	75.3	137.7
Associate professionals	72.8	33.4	106.2
Tradespersons and related workers	137.7	15.4	153.1
Advanced clerical and service workers	* 4.7	40.5	45.3
Intermediate clerical, sales and service workers	45.2	118.5	163.7
Intermediate production and transport workers	87.5	12.6	100.1
Elementary clerical, sales and service workers	28.4	75.2	103.6
Labourers and related workers	77.5	40.8	118.2
<b>Total employed</b>	<b>593.3</b>	<b>434.1</b>	<b>1,027.3</b>

TABLE 19. LABOUR FORCE STATUS (a), REGIONS OF NSW AND ACT

	<i>Month</i>	<i>Employed</i> ( <i>'000</i> )	<i>Unemployed</i> ( <i>'000</i> )	<i>Labour</i> <i>force</i> ( <i>'000</i> )	<i>Unemp-</i> <i>loyment</i> <i>rate</i> ( <i>per cent</i> )	<i>Partici-</i> <i>ipation</i> <i>rate</i> ( <i>per cent</i> )
INNER SYDNEY AND INNER WESTERN SYDNEY (SRs)						
MALES	1999— May	118.5	7.5	125.9	5.9	70.6
	2000— March	136.7	7.3	144.0	5.1	73.3
	April	139.5	5.9	145.4	4.1	72.2
	May	132.7	6.3	139.0	4.5	71.3
FEMALES	1999— May	111.3	* 4.1	115.4	* 3.6	59.3
	2000— March	116.7	* 3.1	119.9	* 2.6	61.5
	April	119.8	* 2.4	122.1	* 1.9	60.6
	May	111.0	* 4.3	115.3	* 3.7	59.2
PERSONS	1999— May	229.8	11.6	241.4	4.8	64.7
	2000— March	253.4	10.4	263.8	3.9	67.4
	April	259.3	8.3	267.5	3.1	66.4
	May	243.7	10.6	254.2	4.2	65.2
INNER SYDNEY (SR)						
MALES	1999— May	75.6	5.7	81.4	7.0	72.0
	2000— March	89.5	4.9	94.3	5.1	74.2
	April	91.8	4.1	95.9	4.3	73.1
	May	84.6	3.8	88.3	4.3	71.3
FEMALES	1999— May	65.7	* 1.5	67.2	* 2.3	61.0
	2000— March	72.8	* 1.1	73.8	* 1.5	62.8
	April	80.7	* 1.6	82.4	* 2.0	65.4
	May	71.4	* 2.5	73.9	* 3.4	61.5
PERSONS	1999— May	141.3	7.2	148.5	4.9	66.5
	2000— March	162.3	5.9	168.2	3.5	68.7
	April	172.5	5.7	178.3	3.2	69.3
	May	156.0	6.3	162.2	3.9	66.5
EASTERN SUBURBS (SR)						
MALES	1999— May	69.9	* 1.4	71.3	* 1.9	75.7
	2000— March	75.8	* 2.1	77.9	* 2.7	72.6
	April	73.2	2.5	75.7	3.3	73.0
	May	75.4	3.0	78.4	3.8	72.3
FEMALES	1999— May	64.9	3.0	67.9	4.4	60.9
	2000— March	54.7	2.7	57.4	4.8	58.4
	April	55.5	* 0.4	55.8	* 0.6	57.3
	May	57.4	* 1.8	59.2	* 3.0	60.7
PERSONS	1999— May	134.8	4.4	139.2	3.2	67.7
	2000— March	130.5	4.8	135.3	3.6	65.8
	April	128.7	2.8	131.5	2.1	65.4
	May	132.8	4.8	137.6	3.5	66.8

TABLE 19. LABOUR FORCE STATUS (a), REGIONS OF NSW AND ACT—continued

	Month	Employed ( <i>'000</i> )	Unemployed ( <i>'000</i> )	Labour force ( <i>'000</i> )	Unemp- loyment rate (per cent)	Partici- pation rate (per cent)
ST GEORGE—SUTHERLAND (SR)						
MALES	1999— May	116.7	4.8	121.5	3.9	69.8
	2000— March	116.2	4.7	120.9	3.9	74.4
	April	115.5	4.1	119.6	3.4	74.0
	May	115.6	3.6	119.2	3.0	73.7
FEMALES	1999— May	90.5	3.2	93.7	3.4	53.7
	2000— March	94.6	2.8	97.4	2.9	58.2
	April	92.5	3.6	96.1	3.8	58.1
	May	95.0	2.2	97.2	2.2	57.4
PERSONS	1999— May	207.2	8.0	215.2	3.7	61.7
	2000— March	210.8	7.5	218.3	3.4	66.2
	April	208.0	7.7	215.7	3.6	66.0
	May	210.6	5.8	216.4	2.7	65.4
CANTERBURY—BANKSTOWN (SR)						
MALES	1999— May	84.6	6.6	91.1	7.2	71.6
	2000— March	86.1	9.2	95.3	9.6	75.2
	April	86.3	6.7	92.9	7.2	72.2
	May	84.4	6.4	90.8	7.0	72.3
FEMALES	1999— May	53.0	* 1.7	54.7	* 3.1	43.6
	2000— March	63.7	6.1	69.8	8.7	51.6
	April	61.9	3.3	65.2	5.0	48.1
	May	57.9	3.9	61.8	6.4	48.3
PERSONS	1999— May	137.6	8.3	145.9	5.7	57.7
	2000— March	149.9	15.2	165.1	9.2	63.0
	April	148.2	9.9	158.1	6.3	59.8
	May	142.2	10.3	152.6	6.8	60.2
FAIRFIELD—LIVERPOOL AND OUTER SOUTH WESTERN SYDNEY (SRs)						
MALES	1999— May	141.4	14.5	155.9	9.3	73.0
	2000— March	146.7	10.2	156.8	6.5	72.4
	April	151.3	11.4	162.8	7.0	73.3
	May	156.3	9.8	166.1	5.9	74.6
FEMALES	1999— May	97.6	13.9	111.5	12.5	51.8
	2000— March	110.2	12.2	122.3	10.0	54.1
	April	114.6	12.5	127.1	9.8	55.6
	May	114.2	15.0	129.3	11.6	56.3
PERSONS	1999— May	239.0	28.4	267.4	10.6	62.3
	2000— March	256.8	22.3	279.2	8.0	63.0
	April	266.0	23.9	289.9	8.2	64.3
	May	270.6	24.8	295.3	8.4	65.3



TABLE 19. LABOUR FORCE STATUS (a), REGIONS OF NSW AND ACT—continued

	<i>Month</i>	<i>Employed</i> ( <i>'000</i> )	<i>Unemployed</i> ( <i>'000</i> )	<i>Labour</i> <i>force</i> ( <i>'000</i> )	<i>Unemp-</i> <i>loyment</i> <i>rate</i> ( <i>per cent</i> )	<i>Partici-</i> <i>pation</i> <i>rate</i> ( <i>per cent</i> )
FAIRFIELD—LIVERPOOL (SR)						
MALES	1999— May	80.7	10.4	91.1	11.4	69.0
	2000— March	79.2	5.5	84.7	6.5	68.3
	April	82.0	6.8	88.9	7.7	71.6
	May	87.9	5.3	93.2	5.7	72.6
	FEMALES	1999— May	52.2	8.5	60.7	14.0
	2000— March	61.0	7.0	67.9	10.2	51.4
	April	61.7	6.6	68.3	9.6	51.2
	May	62.4	9.6	72.0	13.3	52.7
PERSONS	1999— May	133.0	18.9	151.9	12.4	58.3
	2000— March	140.2	12.5	152.7	8.2	59.6
	April	143.8	13.4	157.2	8.5	61.0
	May	150.3	15.0	165.2	9.0	62.3
	CENTRAL WESTERN SYDNEY (SR)					
MALES	1999— May	76.7	3.8	80.5	4.7	71.9
	2000— March	76.1	4.9	81.0	6.0	67.7
	April	79.3	4.0	83.3	4.8	69.8
	May	72.3	2.4	74.8	3.2	66.8
	FEMALES	1999— May	52.8	3.9	56.8	6.9
	2000— March	51.1	4.2	55.4	7.6	46.5
	April	55.7	2.5	58.2	4.2	50.0
	May	52.7	2.5	55.2	4.6	49.3
PERSONS	1999— May	129.5	7.7	137.3	5.6	59.4
	2000— March	127.3	9.1	136.4	6.7	57.1
	April	135.1	6.4	141.5	4.5	60.0
	May	125.0	4.9	130.0	3.8	58.1
	OUTER WESTERN SYDNEY (SR) AND BLACKTOWN (C) (b)					
MALES	1999— May	161.6	8.3	169.8	4.9	77.7
	2000— March	161.4	10.2	171.6	5.9	75.5
	April	162.2	9.6	171.9	5.6	76.5
	May	161.5	7.7	169.2	4.5	75.7
	FEMALES	1999— May	114.6	7.1	121.7	5.8
	2000— March	120.3	10.5	130.7	8.0	57.2
	April	120.6	8.7	129.4	6.8	56.0
	May	124.1	7.1	131.2	5.4	57.4
PERSONS	1999— May	276.2	15.3	291.5	5.3	66.6
	2000— March	281.7	20.7	302.4	6.8	66.3
	April	282.9	18.4	301.3	6.1	66.1
	May	285.6	14.8	300.4	4.9	66.4

TABLE 19. LABOUR FORCE STATUS (a), REGIONS OF NSW AND ACT—continued

	Month	Employed ( <i>'000</i> )	Unemployed ( <i>'000</i> )	Labour force ( <i>'000</i> )	Unemp- loyment rate (per cent)	Partici- pation rate (per cent)
LOWER NORTHERN SYDNEY (SR)						
MALES	1999— May	75.2	* 1.7	76.8	* 2.2	71.3
	2000— March	76.1	* 2.7	78.8	* 3.4	75.9
	April	81.4	* 2.1	83.5	* 2.5	78.7
	May	79.9	3.3	83.2	3.9	78.0
	FEMALES	1999— May	73.7	* 1.9	75.7	* 2.6
	2000— March	60.5	3.2	63.7	5.0	56.9
	April	65.8	3.8	69.5	5.4	61.4
	May	68.7	* 2.1	70.8	* 3.0	60.0
PERSONS	1999— May	148.9	3.6	152.5	2.4	67.5
	2000— March	136.6	5.9	142.5	4.1	66.1
	April	147.2	5.8	153.1	3.8	69.7
	May	148.6	5.4	154.0	3.5	68.5
	HORNSBY—KU-RING-GAI (SR) AND BAULKHAM HILLS (A) (b)					
MALES	1999— May	116.2	* 2.8	119.0	* 2.3	78.7
	2000— March	117.0	* 2.4	119.4	* 2.0	77.2
	April	109.2	* 1.2	110.4	* 1.1	74.4
	May	116.6	* 2.0	118.6	* 1.7	76.9
	FEMALES	1999— May	89.3	4.7	94.0	5.0
	2000— March	101.0	* 2.7	103.7	* 2.6	59.1
	April	96.8	* 1.8	98.6	* 1.8	58.8
	May	100.7	* 2.6	103.4	* 2.5	60.7
PERSONS	1999— May	205.5	7.5	213.0	3.5	68.6
	2000— March	218.0	5.0	223.1	2.3	67.6
	April	206.0	3.0	209.0	1.5	66.1
	May	217.3	4.6	222.0	2.1	68.4
	NORTHERN BEACHES (SR)					
MALES	1999— May	67.7	* 1.3	69.1	* 2.0	77.9
	2000— March	65.7	3.1	68.8	4.5	75.7
	April	64.7	* 2.8	67.5	* 4.1	75.2
	May	67.9	* 2.5	70.3	* 3.5	75.0
	FEMALES	1999— May	47.5	* 1.6	49.1	* 3.3
	2000— March	59.0	* 1.0	60.0	* 1.7	62.9
	April	57.0	* 0.3	57.3	* 0.5	58.9
	May	58.9	* 1.4	60.3	* 2.3	57.9
PERSONS	1999— May	115.2	* 3.0	118.2	* 2.5	65.2
	2000— March	124.7	4.1	128.8	3.2	69.1
	April	121.7	3.1	124.8	2.5	66.7
	May	126.8	3.9	130.6	3.0	66.0

TABLE 19. LABOUR FORCE STATUS (a), REGIONS OF NSW AND ACT—continued

	<i>Month</i>	<i>Employed</i> ( '000)	<i>Unemployed</i> ( '000)	<i>Labour force</i> ( '000)	<i>Unemployment rate</i> (per cent)	<i>Participation rate</i> (per cent)
GOSFORD—WYONG (SR)						
MALES	1999— May	66.4	4.8	71.1	6.7	63.5
	2000— March	52.5	6.5	59.0	11.0	61.7
	April	57.2	5.5	62.7	8.8	64.1
	May	63.7	5.6	69.3	8.1	67.1
	FEMALES	1999— May	45.0	2.6	47.6	5.4
	2000— March	41.1	3.1	44.2	7.1	40.7
	April	44.2	2.5	46.7	5.4	42.8
	May	50.2	* 2.2	52.4	* 4.1	46.5
PERSONS	1999— May	111.4	7.3	118.7	6.2	53.0
	2000— March	93.6	9.6	103.2	9.3	50.5
	April	101.4	8.0	109.5	7.4	52.9
	May	113.9	7.8	121.7	6.4	56.4
	HUNTER (SR)					
MALES	1999— May	129.6	13.3	142.8	9.3	66.1
	2000— March	147.4	15.2	162.6	9.4	69.4
	April	146.0	12.0	158.0	7.6	67.6
	May	148.3	10.0	158.4	6.3	66.7
	FEMALES	1999— May	99.2	10.0	109.1	9.1
2000— March		115.4	9.9	125.3	7.9	52.7
April		113.3	11.1	124.4	8.9	52.0
May		110.2	10.8	121.1	8.9	49.7
PERSONS		1999— May	228.8	23.2	252.0	9.2
	2000— March	262.8	25.1	287.9	8.7	61.0
	April	259.3	23.1	282.4	8.2	59.7
	May	258.5	20.9	279.4	7.5	58.1
	NEWCASTLE (SRS)					
MALES	1999— May	107.2	11.2	118.4	9.4	65.7
	2000— March	129.5	14.5	144.0	10.1	70.5
	April	128.0	11.0	139.0	7.9	68.3
	May	131.2	9.0	140.2	6.4	67.6
	FEMALES	1999— May	87.9	9.0	96.9	9.3
2000— March		102.3	8.5	110.9	7.7	54.0
April		100.6	9.7	110.4	8.8	53.3
May		97.8	10.2	108.0	9.4	50.7
PERSONS		1999— May	195.1	20.2	215.3	9.4
	2000— March	231.8	23.0	254.9	9.0	62.2
	April	228.7	20.7	249.3	8.3	60.7
	May	229.0	19.2	248.2	7.7	59.0

TABLE 19. LABOUR FORCE STATUS (a), REGIONS OF NSW AND ACT—continued

	<i>Month</i>	<i>Employed</i> ( <i>'000</i> )	<i>Unemployed</i> ( <i>'000</i> )	<i>Labour</i> <i>force</i> ( <i>'000</i> )	<i>Unemp-</i> <i>loyment</i> <i>rate</i> ( <i>per cent</i> )	<i>Partici-</i> <i>pation</i> <i>rate</i> ( <i>per cent</i> )
ILLAWARRA AND SOUTH EASTERN (SRs) (c)						
MALES	1999— May	135.3	13.1	148.4	8.8	68.2
	2000— March	147.2	12.8	160.0	8.0	69.3
	April	148.0	10.9	158.9	6.9	67.3
	May	153.3	11.2	164.5	6.8	69.8
	FEMALES	1999— May	94.4	8.6	102.9	8.3
	2000— March	99.5	9.5	109.0	8.7	47.5
	April	101.4	9.2	110.6	8.3	46.9
	May	105.8	7.9	113.7	7.0	47.4
PERSONS	1999— May	229.7	21.6	251.3	8.6	58.1
	2000— March	246.7	22.3	269.0	8.3	58.4
	April	249.4	20.1	269.5	7.5	57.1
	May	259.1	19.1	278.2	6.9	58.5
	ILLAWARRA (SR)					
MALES	1999— May	89.1	9.7	98.8	9.9	67.8
	2000— March	101.5	8.3	109.8	7.5	67.1
	April	102.1	7.4	109.5	6.8	66.0
	May	106.1	7.7	113.8	6.7	69.1
	FEMALES	1999— May	61.8	5.6	67.4	8.3
	2000— March	67.1	6.7	73.9	9.1	46.8
	April	65.9	4.9	70.8	6.9	43.4
	May	70.4	5.7	76.1	7.5	46.1
PERSONS	1999— May	150.9	15.4	166.2	9.2	57.4
	2000— March	168.6	15.0	183.7	8.2	57.2
	April	168.0	12.3	180.4	6.8	54.8
	May	176.5	13.4	189.9	7.0	57.6
	WOLLONGONG (SRS)					
MALES	1999— May	66.3	5.3	71.6	7.4	70.1
	2000— March	75.3	5.4	80.7	6.7	70.0
	April	74.9	5.3	80.2	6.6	68.8
	May	77.5	5.6	83.1	6.7	72.6
	FEMALES	1999— May	44.6	3.7	48.2	7.6
	2000— March	47.6	4.3	51.9	8.3	47.9
	April	47.6	2.7	50.3	5.3	45.5
	May	48.2	3.6	51.8	7.0	47.3
PERSONS	1999— May	110.9	9.0	119.8	7.5	59.7
	2000— March	122.9	9.7	132.6	7.3	59.3
	April	122.5	8.0	130.5	6.1	57.5
	May	125.7	9.2	134.9	6.8	60.2

TABLE 19. LABOUR FORCE STATUS (a), REGIONS OF NSW AND ACT—continued

	<i>Month</i>	<i>Employed</i> ( <i>'000</i> )	<i>Unemployed</i> ( <i>'000</i> )	<i>Labour</i> <i>force</i> ( <i>'000</i> )	<i>Unemp-</i> <i>loyment</i> <i>rate</i> ( <i>per cent</i> )	<i>Partici-</i> <i>pation</i> <i>rate</i> ( <i>per cent</i> )
RICHMOND—TWEED AND MID-NORTH COAST (SRs)						
MALES	1999— May	106.8	14.7	121.5	12.1	62.9
	2000— March	99.0	10.0	109.0	9.2	62.3
	April	101.5	9.3	110.8	8.4	65.1
	May	99.4	10.1	109.5	9.3	64.2
	FEMALES	1999— May	80.0	12.9	92.9	13.9
	2000— March	81.5	10.9	92.4	11.8	47.5
	April	75.0	11.7	86.7	13.5	47.0
	May	75.6	9.2	84.7	10.8	46.2
PERSONS	1999— May	186.8	27.6	214.4	12.9	54.1
	2000— March	180.5	20.9	201.4	10.4	54.5
	April	176.5	21.0	197.5	10.6	55.7
	May	174.9	19.3	194.3	9.9	54.9
	NORTHERN, FAR WEST—NORTH WESTERN AND CENTRAL WEST (SRs) (d)					
MALES	1999— May	130.8	6.3	137.1	4.6	74.2
	2000— March	128.7	9.0	137.7	6.6	72.1
	April	128.5	10.0	138.5	7.2	72.6
	May	116.9	10.0	126.9	7.9	69.0
	FEMALES	1999— May	92.1	5.4	97.5	5.5
	2000— March	94.3	5.5	99.8	5.5	52.9
	April	95.4	5.1	100.5	5.1	53.2
	May	89.4	6.0	95.5	6.3	53.2
PERSONS	1999— May	222.9	11.7	234.6	5.0	64.6
	2000— March	222.9	14.6	237.5	6.1	62.6
	April	223.9	15.1	239.0	6.3	62.9
	May	206.4	16.0	222.4	7.2	61.2
	MURRAY—MURRUMBIDGEE (SR)					
MALES	1999— May	65.3	* 5.6	70.8	* 7.9	70.6
	2000— March	69.2	* 3.9	73.1	* 5.3	80.0
	April	72.5	* 2.4	74.9	* 3.2	81.1
	May	75.3	* 4.3	79.7	* 5.4	82.0
	FEMALES	1999— May	44.5	* 5.3	49.7	* 10.6
	2000— March	44.4	* 4.9	49.3	* 10.0	52.6
	April	49.2	* 3.8	53.0	* 7.1	54.8
	May	53.0	* 4.7	57.7	* 8.1	57.9
PERSONS	1999— May	109.7	10.8	120.6	9.0	58.9
	2000— March	113.6	8.8	122.4	7.2	66.1
	April	121.7	6.2	127.9	4.8	67.7
	May	128.4	9.0	137.3	6.5	69.8

TABLE 19. LABOUR FORCE STATUS (a), REGIONS OF NSW AND ACT—continued

	<i>Month</i>	<i>Employed</i> ( <i>'000</i> )	<i>Unemployed</i> ( <i>'000</i> )	<i>Labour</i> <i>force</i> ( <i>'000</i> )	<i>Unemp-</i> <i>loyment</i> <i>rate</i> ( <i>per cent</i> )	<i>Partici-</i> <i>pation</i> <i>rate</i> ( <i>per cent</i> )
AUSTRALIAN CAPITAL TERRITORY AND SOUTH EASTERN (SRs) (c)						
MALES	1999— May	129.3	9.1	138.5	6.6	74.3
	2000— March	132.7	10.2	142.9	7.1	77.6
	April	133.0	8.8	141.8	6.2	75.6
	May	134.1	8.5	142.6	6.0	75.4
	FEMALES	1999— May	108.5	7.4	115.9	6.4
	2000— March	109.3	7.4	116.7	6.3	59.8
	April	114.1	8.1	122.2	6.6	62.3
	May	114.6	7.0	121.6	5.8	61.3
PERSONS	1999— May	237.8	16.5	254.3	6.5	67.1
	2000— March	242.1	17.6	259.7	6.8	68.5
	April	247.1	16.9	264.0	6.4	68.8
	May	248.6	15.6	264.2	5.9	68.2

(a) While the Labour Force Survey is designed primarily to produce reliable estimates at the national and State/Territory level, it also delivers estimates for a number of regions within States. As with national and State estimates, regional labour force estimates are subject to sampling error. Since estimates for regions are components of corresponding estimates at the State level — and are thus based on a considerably smaller sample size — they are subject to higher relative standard error. Care should therefore be taken in interpretation of regional estimates, particularly month to month movements. Tables of standard errors are included in the Technical Note on pages 59-64 of this publication. Regional estimates from September 1997 onward may not be directly comparable with those before September 1997 because a new sample has been selected which may have different characteristics to the old. (b) New region from September 1997. (c) Estimates for the South Eastern (SR) are not published separately. Data for the South Eastern (SR) are included in ACT and South Eastern (SRs) and in Illawarra and South Eastern (SRs). (d) From September 1997 includes Far West Statistical Division, previously excluded. Break in the series from September 1997.

TABLE 20. LABOUR FORCE STATUS: ORIGINAL SERIES, ACT

Month	Employed			Unemployed			Labour force ('000)	Not in labour force ('000)	Civilian population aged 15 and over ('000)	Unemployment rate (per cent)	Participation rate (per cent)
	Full-time workers ('000)	Part-time workers ('000)	Total ('000)	Looking for full-time work ('000)	Looking for part-time work ('000)	Total ('000)					
MALES											
May—											
1996	71.1	10.6	81.8	5.8	1.4	7.2	89.0	22.2	111.2	8.1	80.0
1997	69.7	11.5	81.2	3.7	2.0	5.7	86.9	24.7	111.6	6.6	77.9
1998	70.1	10.6	80.7	5.1	1.4	6.5	87.2	25.9	113.1	7.5	77.1
1999—											
March	67.8	13.7	81.6	4.5	2.0	6.5	88.1	26.3	114.4	7.4	77.0
April	67.8	12.7	80.5	5.2	1.1	6.2	86.7	27.8	114.5	7.2	75.7
May	69.8	13.3	83.1	3.9	1.9	5.8	88.9	25.7	114.6	6.5	77.6
2000—											
February	73.2	13.8	86.9	4.2	1.2	5.4	92.3	24.3	116.6	5.8	79.2
March	74.1	12.9	87.0	3.9	1.8	5.7	92.7	24.3	117.0	6.1	79.2
April	73.1	14.0	87.1	3.8	1.5	5.3	92.4	25.1	117.5	5.8	78.7
May	74.0	12.9	86.9	3.6	1.5	5.1	92.0	26.1	118.0	5.5	77.9
MARRIED FEMALES											
May—											
1996	26.0	19.0	45.1	1.4	* 0.6	2.0	47.0	21.4	68.4	4.2	68.7
1997	28.8	15.8	44.6	1.3	* 0.9	2.1	46.7	21.2	67.9	4.6	68.8
1998	26.9	16.5	43.4	* 0.9	* 0.9	1.8	45.2	21.8	67.0	4.0	67.5
1999—											
March	26.2	15.5	41.7	* 0.9	* 0.8	1.6	43.3	25.7	69.0	3.8	62.8
April	26.9	15.9	42.8	* 0.8	* 0.3	* 1.0	43.8	24.8	68.6	* 2.3	63.8
May	26.6	16.7	43.3	* 1.0	* 0.6	1.7	45.0	24.9	69.9	3.7	64.3
2000—											
February	29.0	15.4	44.4	* 0.7	* 0.9	1.6	46.0	19.5	65.5	3.5	70.2
March	28.8	14.4	43.2	* 0.9	* 0.5	1.4	44.5	19.7	64.2	3.1	69.4
April	28.7	15.7	44.3	* 0.8	* 0.5	1.2	45.6	19.6	65.2	2.7	69.9
May	29.2	16.1	45.2	* 0.4	* 0.8	1.2	46.4	19.0	65.4	2.6	71.0
ALL FEMALES											
May—											
1996	44.3	29.3	73.5	3.9	2.3	6.2	79.7	40.8	120.5	7.8	66.2
1997	47.2	28.6	75.8	3.5	2.4	5.9	81.6	39.1	120.7	7.2	67.6
1998	47.1	28.4	75.4	2.4	2.3	4.7	80.1	40.9	121.1	5.8	66.2
1999—											
March	46.9	27.0	73.9	2.5	2.6	5.1	79.0	42.8	121.8	6.5	64.9
April	47.0	29.1	76.1	1.9	1.7	3.6	79.7	42.2	121.9	4.5	65.4
May	47.5	28.4	75.9	2.2	2.2	4.4	80.3	41.6	122.0	5.5	65.9
2000—											
February	53.5	25.6	79.1	2.4	2.6	5.0	84.1	38.9	123.1	5.9	68.4
March	52.6	24.4	77.0	2.3	2.3	4.6	81.6	41.6	123.2	5.7	66.2
April	52.4	26.3	78.6	2.1	1.7	3.8	82.4	41.0	123.5	4.6	66.8
May	52.1	27.1	79.2	2.7	2.0	4.8	84.0	39.7	123.7	5.7	67.9
PERSONS											
May—											
1996	115.4	39.9	155.3	9.7	3.7	13.4	168.8	63.0	231.7	8.0	72.8
1997	116.9	40.1	157.0	7.3	4.3	11.6	168.6	63.8	232.3	6.9	72.6
1998	117.1	39.0	156.1	7.5	3.7	11.2	167.3	66.8	234.2	6.7	71.5
1999—											
March	114.7	40.8	155.5	7.0	4.6	11.7	167.2	69.1	236.2	7.0	70.8
April	114.8	41.8	156.6	7.1	2.8	9.8	166.4	70.0	236.4	5.9	70.4
May	117.3	41.7	159.0	6.1	4.1	10.2	169.3	67.3	236.6	6.0	71.5
2000—											
February	126.7	39.4	166.1	6.6	3.7	10.3	176.4	63.2	239.6	5.9	73.6
March	126.7	37.3	164.0	6.3	4.0	10.3	174.3	65.9	240.3	5.9	72.6
April	125.5	40.3	165.7	5.9	3.2	9.1	174.9	66.1	241.0	5.2	72.6
May	126.1	40.0	166.1	6.3	3.5	9.8	175.9	65.8	241.7	5.6	72.8

TABLE 21. LABOUR FORCE STATUS: TREND SERIES (a), ACT

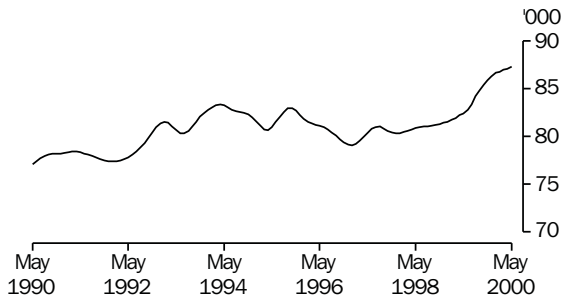
Month	Employed ( <i>'000</i> )	Unemployed ( <i>'000</i> )	Labour force ( <i>'000</i> )	Unemployment rate (per cent)	Participation rate (per cent)
MALES					
<i>May—</i>					
1996	81.1	7.5	88.6	8.5	79.7
1997	80.4	6.7	87.1	7.7	78.1
1998	80.9	7.0	87.9	8.0	77.8
<i>1999—</i>					
March	82.0	5.8	87.8	6.6	76.7
April	82.1	5.8	88.0	6.6	76.8
May	82.4	5.9	88.3	6.7	77.0
June	82.8	5.9	88.7	6.7	77.3
July	83.4	5.9	89.3	6.6	77.7
August	84.2	5.8	89.9	6.4	78.2
September	84.9	5.7	90.6	6.3	78.6
October	85.4	5.6	91.1	6.2	78.9
November	86.0	5.5	91.5	6.0	79.2
December	86.4	5.4	91.8	5.9	79.2
<i>2000—</i>					
January	86.7	5.3	92.0	5.8	79.2
February	86.8	5.3	92.1	5.8	79.0
March	87.0	5.3	92.3	5.7	78.9
April	87.1	5.3	92.5	5.8	78.7
May	87.3	5.3	92.6	5.7	78.6
FEMALES					
<i>May—</i>					
1996	72.8	6.6	79.4	8.3	65.9
1997	74.8	5.5	80.3	6.9	66.5
1998	75.1	4.5	79.6	5.6	65.8
<i>1999—</i>					
March	75.2	4.3	79.5	5.4	65.3
April	75.3	4.2	79.5	5.2	65.2
May	75.7	4.0	79.7	5.0	65.3
June	76.2	3.8	80.0	4.8	65.6
July	76.8	3.8	80.6	4.7	66.0
August	77.4	3.9	81.3	4.8	66.5
September	77.9	4.1	82.0	5.0	67.0
October	78.3	4.2	82.5	5.1	67.4
November	78.6	4.2	82.8	5.1	67.6
December	78.6	4.2	82.8	5.0	67.5
<i>2000—</i>					
January	78.6	4.1	82.7	4.9	67.3
February	78.6	4.0	82.6	4.8	67.1
March	78.6	4.0	82.6	4.9	67.0
April	78.5	4.1	82.7	5.0	67.0
May	78.5	4.3	82.8	5.2	67.0
PERSONS					
<i>May—</i>					
1996	153.9	14.1	168.1	8.4	72.5
1997	155.2	12.2	167.4	7.3	72.0
1998	156.0	11.5	167.5	6.9	71.6
<i>1999—</i>					
March	157.2	10.1	167.3	6.0	70.8
April	157.5	10.0	167.5	6.0	70.9
May	158.0	9.9	167.9	5.9	71.0
June	159.0	9.8	168.8	5.8	71.3
July	160.3	9.7	169.9	5.7	71.7
August	161.6	9.7	171.2	5.7	72.2
September	162.8	9.8	172.5	5.7	72.6
October	163.7	9.8	173.6	5.7	73.0
November	164.5	9.7	174.3	5.6	73.2
December	165.0	9.6	174.6	5.5	73.2
<i>2000—</i>					
January	165.3	9.4	174.7	5.4	73.1
February	165.5	9.3	174.8	5.3	72.9
March	165.6	9.3	174.9	5.3	72.8
April	165.7	9.4	175.1	5.4	72.7
May	165.9	9.6	175.4	5.5	72.7

(a) See Explanatory Notes 29 and 30.

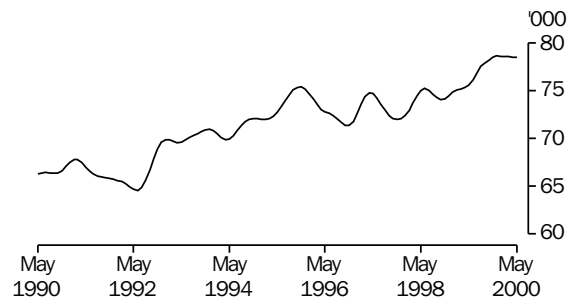


TREND SERIES, ACT(a)

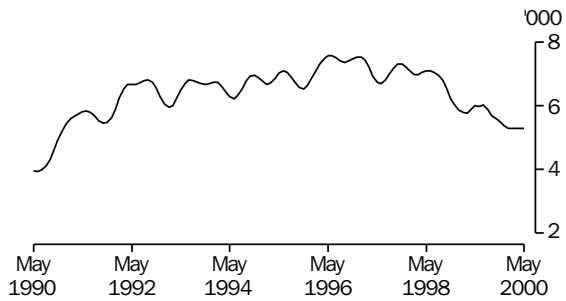
EMPLOYED MALES



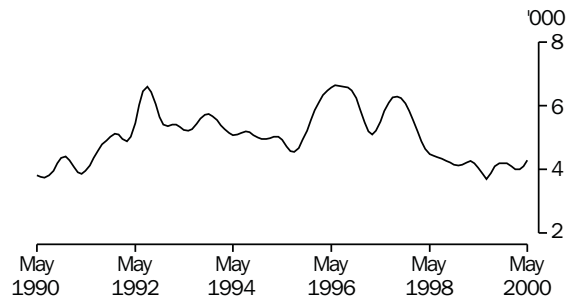
EMPLOYED FEMALES



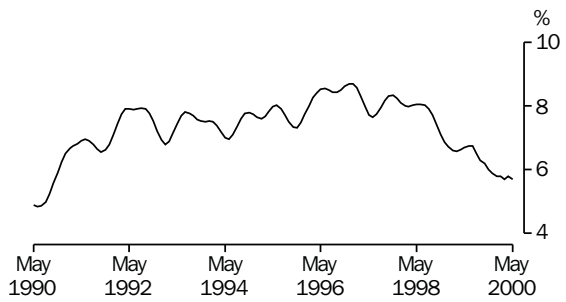
UNEMPLOYED MALES



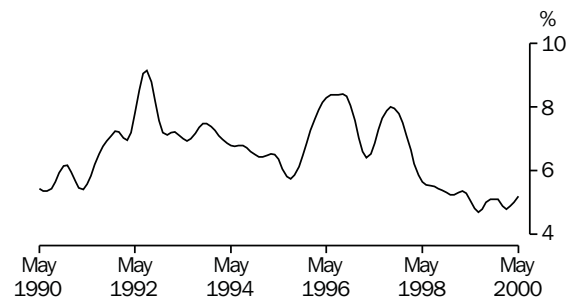
UNEMPLOYED FEMALES



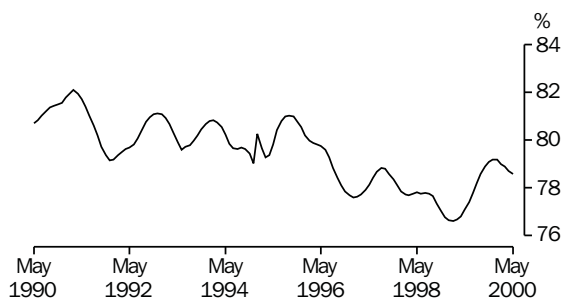
MALE UNEMPLOYMENT RATE



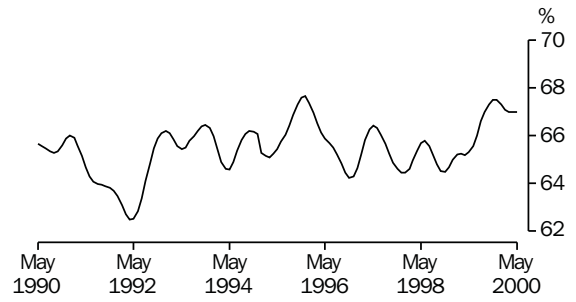
FEMALE UNEMPLOYMENT RATE



MALE PARTICIPATION RATE



FEMALE PARTICIPATION RATE



(a) Comparisons between these graphs should not be made, as their vertical axes are not similarly scaled.

**TABLE 22. LABOUR FORCE STATUS: AGE, ACT, MAY 2000**

	Persons						
	Females			Age group (years)			Total
	Males	Married	Total	15-19	20-24	25 and over	
	— '000 —						
<i>Employed</i>	86.9	45.2	79.2	11.8	20.8	133.6	166.1
Full-time workers	74.0	29.2	52.1	3.8	14.5	107.7	126.1
Part-time workers	12.9	16.1	27.1	7.9	6.2	25.8	40.0
<i>Unemployed</i>	5.1	1.2	4.8	2.8	2.0	5.1	9.8
Looking for full-time work	3.6	* 0.4	2.7	* 0.9	1.3	4.1	6.3
Looking for part-time work	1.5	* 0.8	2.0	1.8	* 0.6	* 1.0	3.5
<i>Labour force</i>	92.0	46.4	84.0	14.6	22.7	138.6	175.9
Not in labour force	26.1	19.0	39.7	9.4	3.7	52.8	65.8
Aged 15-19 attending school	4.0	* 0.1	3.7	7.6	..	..	7.6
<i>Civilian population</i>	118.0	65.4	123.7	23.9	26.4	191.4	241.7
	— per cent —						
Unemployment rate	5.5	2.6	5.7	19.0	8.6	3.7	5.6
Looking for full-time work	4.6	* 1.5	4.9	* 19.3	8.4	3.6	4.8
Participation rate	77.9	71.0	67.9	60.8	86.0	72.4	72.8
Employment/population ratio	73.6	69.2	64.0	49.3	78.6	69.8	68.7
	— number —						
Average weekly hours worked							
by employed persons	39.2	31.0	31.4	19.7	33.5	37.2	35.5
Average duration of unemployment (weeks)	44.5	* 18.1	26.6	17.4	49.1	40.7	35.8

**TABLE 23. NON-INSTITUTIONALISED PERSONS(a): LABOUR FORCE STATUS, BIRTHPLACE AND YEAR OF ARRIVAL, ACT, MAY 2000**  
(\*000)

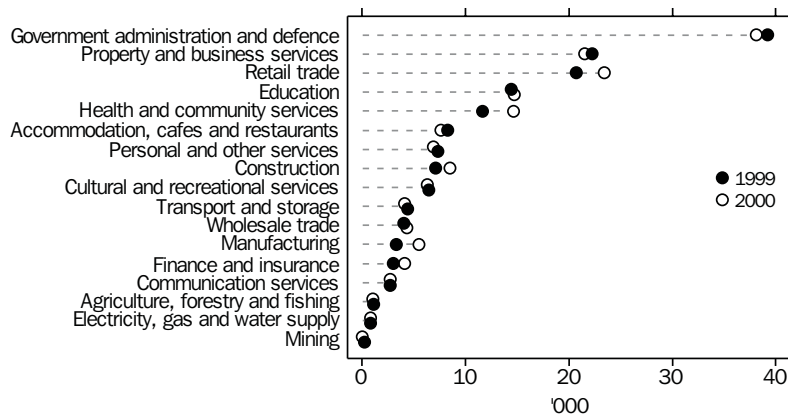
	Employed	Unemployed	Not in labour force	Labour force	Civilian population aged 15 and over
<i>Born in Australia</i>	128.6	8.0	42.7	136.6	179.2
<i>Born outside Australia</i>	37.5	1.8	23.0	39.3	62.3
Arrived before 1966	10.3	* 0.3	10.1	10.6	20.6
Arrived 1966-1970	4.7	* 0.3	2.8	5.0	7.7
Arrived 1971-1975	5.7	* 0.1	* 1.0	5.8	6.8
Arrived 1976-1980	3.2	* 0.1	1.3	3.3	4.7
Arrived 1981-1985	4.0	* 0.1	1.3	4.1	5.4
Arrived 1986-1990	4.9	* 0.4	2.5	5.3	7.8
Arrived 1991-1995	2.0	* 0.3	1.4	2.3	3.7
Arrived 1991 to survey date	4.0	* 0.4	3.7	4.3	8.0
<i>Main English speaking countries</i>	13.7	* 0.7	6.3	14.4	20.7
Arrived before 1966	3.5	* 0.2	3.1	3.7	6.8
Arrived 1966-1970	1.9	* 0.2	1.2	2.1	3.4
Arrived 1971-1975	3.5	* 0.1	* 0.2	3.5	3.7
Arrived 1976-1980	1.1	* 0.0	* 0.3	1.1	1.4
Arrived 1981-1985	1.3	* 0.0	* 0.3	1.3	1.6
Arrived 1986-1990	1.4	* 0.2	* 0.4	1.6	2.0
Arrived 1991-1995	* 0.4	* 0.0	* 0.4	* 0.4	* 0.8
Arrived 1991 to survey date	* 0.9	* 0.0	* 0.9	* 0.9	1.7
<i>Other than Main English speaking countries</i>	23.8	1.2	16.6	25.0	41.6
Arrived before 1966	6.8	* 0.1	7.0	6.9	13.9
Arrived 1966-1970	2.8	* 0.1	1.5	2.8	4.4
Arrived 1971-1975	2.3	* 0.0	* 0.8	2.3	3.1
Arrived 1976-1980	2.2	* 0.1	* 1.0	2.3	3.3
Arrived 1981-1985	2.7	* 0.1	* 1.0	2.8	3.8
Arrived 1986-1990	<b>3.5</b>	<b>* 0.2</b>	<b>2.1</b>	<b>3.7</b>	<b>5.8</b>
Arrived 1991-1995	1.6	* 0.3	* 1.0	1.9	2.9
Arrived 1991 to survey date	3.1	* 0.4	2.9	3.5	6.3
<b>Total</b>	166.1	9.8	65.6	175.9	241.5

(a) Excludes boarding school pupils.

**TABLE 24. EMPLOYED PERSONS: INDUSTRY, ACT  
(<sup>'000</sup>)**

Industry division	Average for year ending					
	May 1999			May 2000		
	Males	Females	Persons	Males	Females	Persons
Industry—						
Agriculture, forestry and fishing	* 0.6	* 0.5	1.1	* 0.7	* 0.3	* 1.0
Mining	* 0.2	* 0.0	* 0.2	* 0.0	* 0.0	* 0.0
Manufacturing	2.2	1.2	3.3	3.8	1.7	5.5
Electricity, gas and water supply	* 0.6	* 0.2	* 0.8	* 0.5	* 0.2	* 0.8
Construction	6.1	* 1.0	7.1	7.6	* 0.9	8.5
Wholesale trade	3.0	* 1.0	4.0	2.8	1.5	4.3
Retail trade	10.6	10.1	20.7	12.7	10.8	23.4
Accommodation, cafes and restaurants	4.2	4.1	8.3	3.5	4.1	7.6
Transport and storage	3.3	1.1	4.4	2.9	1.2	4.1
Communication services	1.7	* 1.0	2.7	1.6	1.1	2.7
Finance and insurance	* 0.9	2.1	3.0	2.0	2.1	4.1
Property and business services	13.0	9.2	22.2	12.8	8.8	21.5
Government administration and defence	21.4	17.8	39.2	19.2	18.9	38.1
Education	5.2	9.2	14.4	5.7	9.0	14.7
Health and community services	2.0	9.6	11.6	3.1	11.5	14.6
Cultural and recreational services	3.0	3.4	6.4	3.4	2.8	6.3
Personal and other services	3.8	3.5	7.3	3.5	3.4	6.9
<b>Total employed</b>	<b>81.8</b>	<b>75.0</b>	<b>156.8</b>	<b>85.7</b>	<b>78.2</b>	<b>163.9</b>

AVERAGE EMPLOYMENT BY INDUSTRY DIVISION, ACT, YEAR ENDING MAY



**TABLE 25. EMPLOYED PERSONS: OCCUPATION, ACT**  
(<sup>'000</sup>)

Major occupation group	Average for year ending					
	May 1999			May 2000		
	Males	Females	Persons	Males	Females	Persons
Occupation—						
Managers and administrators	9.5	4.0	13.6	9.9	4.4	14.3
Professionals	19.2	18.5	37.7	23.0	20.5	43.6
Associate professionals	14.1	10.1	24.2	12.7	10.8	23.5
Tradespersons and related workers	11.8	1.6	13.4	13.2	1.5	14.7
Advanced clerical and service workers	* 0.5	5.0	5.4	* 0.6	5.2	5.8
Intermediate clerical, sales and service workers	9.1	21.0	30.0	9.5	22.7	32.2
Intermediate production and transport workers	4.5	* 0.5	5.0	5.3	* 0.8	6.1
Elementary clerical, sales and service workers	8.3	11.5	19.7	6.5	9.6	16.2
Labourers and related workers	4.9	2.9	7.7	5.0	2.5	7.4
<b>Total employed</b>	<b>81.8</b>	<b>75.0</b>	<b>156.8</b>	<b>85.7</b>	<b>78.2</b>	<b>163.9</b>

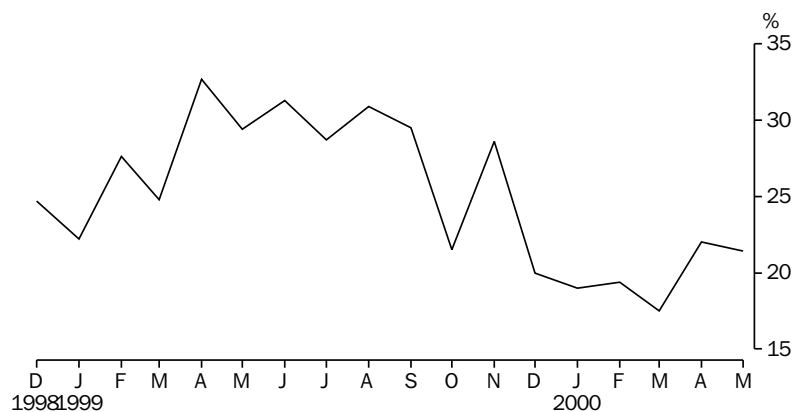
AVERAGE EMPLOYMENT BY OCCUPATION GROUP, ACT, YEAR ENDING MAY



**TABLE 26. LONG-TERM UNEMPLOYMENT, ACT**

Month	Long-term unemployment									Long-term unemployment as a proportion of total unemployment		
	52 weeks and under 104			104 weeks and over			Total			Males (per cent)	Females (per cent)	Persons (per cent)
	Males ( <i>'000</i> )	Females ( <i>'000</i> )	Persons ( <i>'000</i> )	Males ( <i>'000</i> )	Females ( <i>'000</i> )	Persons ( <i>'000</i> )	Males ( <i>'000</i> )	Females ( <i>'000</i> )	Persons ( <i>'000</i> )			
<i>1999—</i>												
March	1.2	* 0.8	2.1	* 0.5	* 0.3	* 0.8	1.8	1.1	2.9	27.7	21.6	24.8
April	1.5	* 0.3	1.9	* 0.8	* 0.5	1.3	2.4	* 0.8	3.2	38.7	22.2	32.7
May	* 0.9	* 0.6	1.5	* 0.7	* 0.7	1.4	1.6	1.3	3.0	27.6	29.5	29.4
June	* 0.8	* 0.3	1.1	* 0.9	* 0.6	1.5	1.7	* 1.0	2.6	36.2	27.8	31.3
July	* 0.7	* 0.3	* 1.0	1.1	* 0.4	1.5	1.8	* 0.7	2.5	30.5	25.0	28.7
August	* 0.8	* 0.4	1.2	1.4	* 0.5	1.8	2.1	* 0.8	3.0	33.3	23.5	30.9
September	* 0.6	* 0.3	* 0.9	1.3	* 0.5	1.9	1.9	* 0.9	2.8	33.3	23.7	29.5
October	* 0.4	* 0.3	* 0.7	* 0.9	* 0.5	1.3	1.3	* 0.8	2.0	27.7	17.4	21.5
November	* 0.7	* 0.5	1.2	1.1	* 0.5	1.6	1.8	* 1.0	2.8	34.6	21.7	28.6
December	* 0.4	* 0.3	* 0.7	* 0.9	* 0.2	1.1	1.3	* 0.5	1.8	24.5	13.5	20.0
<i>2000—</i>												
January	* 0.2	* 0.4	* 0.6	* 1.0	* 0.4	1.4	1.2	* 0.8	2.0	18.2	20.5	19.0
February	* 0.2	* 0.5	* 0.7	* 1.0	* 0.3	1.3	1.2	* 0.7	2.0	22.2	14.0	19.4
March	* 0.3	* 0.4	* 0.7	* 1.0	* 0.2	1.2	1.2	* 0.6	1.8	21.1	13.0	17.5
April	* 0.3	* 0.3	* 0.6	1.1	* 0.3	1.4	1.4	* 0.6	2.0	26.4	15.8	22.0
May	* 0.6	* 0.2	* 0.8	* 0.9	* 0.4	1.3	1.5	* 0.6	2.1	29.4	12.5	21.4

LONG-TERM UNEMPLOYED AS A PROPORTION OF TOTAL UNEMPLOYED, ACT



## EXPLANATORY NOTES

### INTRODUCTION

**1** This publication contains estimates of the labour force derived from the Labour Force Survey (LFS) component of the monthly population survey, which is conducted on a sample basis throughout Australia.

### THE POPULATION SURVEY

**2** This survey consists of the LFS and, in most months, one or more supplementary topics. The survey is based on a multi-stage area sample of private dwellings (houses, flats, etc.) and non-private dwellings (hotels, motels, etc.) and covers 1 in 300 of the population of NSW. The information is obtained from the occupants of selected dwellings by specially trained interviewers. The interviews are generally conducted during the two weeks beginning on the Monday between the 6th and 12th of each month. The information obtained relates to the week before the interview (i.e. the reference week).

### TELEPHONE INTERVIEWING

**3** The ABS has introduced the use of telephone interviewing into the LFS. Households selected for the LFS are interviewed each month for eight months, with one-eighth of the sample being replaced each month. The first interview is conducted face-to-face with subsequent interviews conducted by telephone (if acceptable to the respondent). Telephone interviewing was phased in from August 1996 to February 1997.

### SCOPE

**4** The LFS includes all persons aged 15 years and over, except:

- members of the permanent defence forces;
- certain diplomatic personnel of overseas governments, customarily excluded from census and estimated populations;
- overseas residents in Australia; and
- members of non-Australian defence forces (and their dependants) stationed in Australia.

### SURVEY SAMPLE REDESIGN

**5** The LFS sample was reselected using information collected in the 1996 Census of Population and Housing. The new sample was phased in over the eight-month period from September 1997 to April 1998.

**6** For further details, see *Information Paper: Labour Force Survey Sample Design* (Cat. no. 6269.0).

### POPULATION BENCHMARKS

**7** LFS estimates are calculated in such a way as to add up to independent estimates of the civilian population aged 15 and over (population benchmarks). From February 1999, labour force estimates have been compiled using benchmarks based on the results of the 1996 Census of Population and Housing. Small revisions were made to many of the historical estimates from January 1995 to January 1999.

## DEFINITIONS

**8** The labour force category to which a person is assigned depends on the actual activity undertaken during the reference week (i.e. whether working, looking for work, etc.). The following definitions, which conform closely to the international standard definitions specified by the International Labour Office (ILO), relate only to those persons within the scope of the survey.

**9** *Employed persons* comprise civilians aged 15 years and over who, during the reference week:

- worked for one hour or more for pay, profit, commission or payment in kind (including employees, employers and own account workers) in a job or business, or on a farm; or
- worked for one hour or more without pay in a family business or on a farm (i.e. contributing family workers); or
- were employees who had a job but were not at work and were: on paid leave; on leave without pay for less than four weeks up to the end of the reference week; stood down without pay because of bad weather or plant breakdown at their place of employment for less than four weeks up to the end of the reference week; on strike or locked out; on workers' compensation and expected to be returning to their job; or receiving wages or salary while undertaking full-time study; or
- were employers, own account workers or contributing family workers who had a job, business or farm, but were not at work.

**10** Prior to April 1986, contributing family workers who worked for 1–14 hours were excluded from the category of employed persons.

**11** Employed persons can be classified into:

- *full-time workers*, i.e. those who usually worked 35 hours or more a week (in all jobs) and those who, although usually part-time workers, worked 35 hours or more during the reference week; and
- *part-time workers*, i.e. those who usually worked less than 35 hours a week and who did so during the reference week.

**12** *Unemployed persons* are those aged 15 years and over who were not employed during the reference week, and:

- had actively looked for full-time or part-time work at any time in the four weeks up to the end of the reference week, and:
  - were available for work in the reference week, or would have been available except for temporary illness (i.e. lasting for less than four weeks to the end of the reference week); or
  - were waiting to start a new job within four weeks from the end of the reference week and would have started in the reference week if the job had been available then; or

- were waiting to be called back to a full-time or part-time job from which they had been stood down without pay for less than four weeks up to the end of the reference week (including the whole of the reference week) for reasons other than bad weather or plant breakdown.

**13** *Actively looking for work* includes writing, telephoning or applying in person to an employer for work; answering an advertisement for a job; checking factory notice-boards or the touchscreens at the Centrelink offices; being registered with Centrelink as a jobseeker; checking or registering with any other employment agency; advertising or tendering for work; and contacting friends or relatives.

**14** *The unemployment rate* for any group is the number of unemployed persons expressed as a percentage of the labour force in the same group.

**15** *The labour force* comprises persons who were employed or unemployed as defined above.

**16** *Long-term unemployed* comprises persons unemployed for a period of 52 weeks or more.

**17** *Persons not in the labour force* are those who, during the reference week, were not in the categories employed or unemployed as defined above.

**18** *The participation rate* for any group is the labour force expressed as a percentage of the civilian population aged 15 years and over in the same group.

**19** *Duration of unemployment* is the period from the time the person began looking for work or was stood down to the end of the reference week.

**20** *Unemployed persons classified by industry and occupation.* Unemployed persons who had worked full-time for two weeks or more in the last two years are classified according to the industry and occupation of their most recent full-time job.

**21** *Industry classification.* From August 1994, LFS industry data have been classified according to the *Australian and New Zealand Standard Industrial Classification (ANZSIC), 1993* (Cat. no. 1292.0).

**22** *Occupation classification.* From August 1996, occupation data have been classified according to the *Australian Standard Classification of Occupations (ASCO), Second Edition* (Cat. no. 1220.0).

**23** *Marital status.* In the LFS, persons are classified as married or not married. Persons are classified as married if they are reported as being married (including de facto) and their spouse was a usual resident of the household at the time of the survey.



DEFINITIONS *continued*

**24** *Persons attending school or a tertiary educational institution.*

Persons attending school comprise those aged 15–19 years who, during the reference week, were enrolled full-time at secondary or high schools. Persons attending a tertiary educational institution comprise those aged 15–24 years who were enrolled full-time at universities, other institutions of higher education, TAFE colleges and theological colleges.

**25** *Employment/population ratio.* For any group, the number of employed persons expressed as a percentage of the civilian population aged 15 years and over in the same group.

STATISTICAL AREAS

**26** The regional structure for NSW used in tables 16–19 is based on the Statistical Region structure of the *Australian Standard Geographical Classification (ASGC)* (Cat. no. 1216.0).

**27** Changes were made to labour force regions in NSW from September 1997. Blacktown–Baulkham Hills SR was split up with Blacktown being merged with Outer Western Sydney SR to form Outer Western Sydney SR and Blacktown (C) and Baulkham Hills being merged with Hornsby–Ku-ring-gai SR to form Hornsby–Ku-ring-gai SR and Baulkham Hills (A). In addition, Northern, Far West–North Western and Central West SRs now include the Far West Statistical Division, previously excluded. This has resulted in a series break in the data for this area.

**28** For further details, see *Information Paper: Regional Labour Force Statistics, September 1997* (Cat. no. 6262.0).

SEASONAL ADJUSTMENT  
AND TREND ESTIMATION

**29** Seasonal adjustment is a means of removing the estimated effects of normal seasonal variation from the series so that the effects of other influences on the series can be more clearly recognised.

**30** Smoothing seasonally adjusted series produces a measure of the underlying trend by reducing the impact of the irregular component of the series. The trend estimates are derived by applying a 13-term Henderson-weighted moving average to the respective seasonally adjusted series. While this smoothing technique enables estimates to be produced which include the latest month, it does result in revisions to the most recent months as additional observations become available.

**31** Seasonally adjusted series for NSW appear in table 2. Trend estimates for NSW and ACT appear in tables 2 and 21 respectively. Seasonally adjusted data is not available for the ACT.

RELIABILITY OF THE  
ESTIMATES

**32** Estimates are subject to sampling and non-sampling errors. See the Technical note on pages 58–60 for more information.

## RELATED PUBLICATIONS

**33** Users may also wish to refer to the following related publications which are available from ABS Bookshops:

- *Australian Capital Territory at a Glance*, Cat. no. 1314.8, issued annually.
- *Australian Capital Territory Business Indicators*, Cat. no. 1303.8, issued monthly.
- *Australian Capital Territory Statistical Summary*, Cat. no. 1307.8, issued annually.
- *Information Paper: Labour Force Survey—Sample Design*, Cat. no. 6269.0.
- *Information Paper: Regional Labour Force Statistics, September 1997*, Cat. no. 6262.0
- *Labour Force, Australia, Preliminary*, Cat. no. 6202.0, issued monthly.
- *Labour Force, Australia*, Cat. no. 6203.0, issued monthly.

## ADDITIONAL DATA

**34** The ABS can also make available information which is not published. In general, a charge is made for providing unpublished information.

## ROUNDING

**35** Figures have been rounded and discrepancies may occur between sums of the component items and the totals shown.

## APPENDIX

### SUPPLEMENTARY TOPICS

Although emphasis in the population survey is placed on the regular collection of data on demographic and labour force characteristics, supplementary and special surveys of particular aspects of the labour force are carried out from time to time.

It was ABS practice to release statistics from supplementary and special surveys in *Labour Force, Australia* (Cat. no. 6203.0). This practice ceased with the release of the February 1996 issue of *Labour Force, Australia*. For future releases of supplementary labour data, separate publications containing summary results and key findings will be produced.

Equivalent tables at the State level are available on microfiche. In addition, other unpublished data can be provided to meet special requirements.

CATALOGUE/ PRODUCT NO.	TITLE OF PUBLICATION/STANDARD DATA SERVICE	PRICE(a) \$
6206.0	Labour Force Experience, Australia, February 1999	19.50
6209.0	Labour Mobility, Australia, February 1998	18.50
6216.0	Multiple Jobholding, Australia, August 1997	18.00
6220.0	Persons not in the Labour Force, Australia, September 1999	19.00
6222.0	Job Search Experience of Unemployed Persons, Australia, July 1999	18.50
6224.0	Labour Force Status and Other Characteristics of Families, Australia, June 1999	19.00
6227.0	Transition from Education to Work, Australia, May 1999	19.50
6238.0	Retirement and Retirement Intentions, Australia, November 1997	21.00
6245.0	Successful and Unsuccessful Job Search Experience, Australia, July 1998	18.50
6247.1	Part-time, Casual and Temporary Employment, NSW, October 1997	16.00
6250.0	Labour Force Status and Other Characteristics of Migrants, Australia, November 1996	15.50
6254.0	Career Experience, Australia, November 1998	19.00
6265.0	Underemployed Workers, Australia, September 1998	19.00
6266.0	Retrenchment and Redundancy, Australia, July 1997	21.00
6272.0	Participation in Education, Australia, September 1999	18.50
6275.0	Persons Employed at Home, Australia, September 1995	14.50
6286.0	Australians' Employment and Unemployment Patterns, 1994–1997	23.00
6310.0	Employee Earnings, Benefits and Trade Union Membership, Australia, August 1999	23.00
6342.0	Working Arrangements, Australia, August 1997	19.00

(a) Prices quoted are subject to revision

MAJOR STATISTICAL REGION	STATISTICAL REGION/ STATISTICAL REGION SECTOR	STATISTICAL LOCAL AREA
SYDNEY	Inner Sydney and Inner Western Sydney (SRs)	Ashfield (A)
		Botany (A)
		Burwood (A)
		Concord (A)
		Drummoyne (A)
		Leichhardt (A)
		Marrickville (A)
		South Sydney (C)
		Strathfield (A)
		Sydney (C)—Inner Sydney (C)—Remainder
	Inner Sydney (SR)	Botany (A)
		Leichhardt (A)
		Marrickville (A)
		South Sydney (C)
		Sydney (C)—Inner Sydney (C)—Remainder
	Eastern Suburbs (SR)	Randwick (C)
		Waverley (A)
		Woollahra (A)
	St George–Sutherland (SR)	Hurstville (C)
		Kogarah (A)
		Rockdale (A)
		Sutherland Shire (A)
	Canterbury–Bankstown (SR)	Bankstown (C)
		Canterbury (A)
	Fairfield–Liverpool and Outer South Western Sydney (SRs)	Camden (A)
		Campbelltown (C)
		Fairfield (C)
		Liverpool (C)
		Wollondilly (A)
	Fairfield–Liverpool (SR)	Fairfield (C)
		Liverpool (C)
	Central Western Sydney (SR)	Auburn (A)
		Holroyd (C)
		Parramatta (C)
	Outer Western Sydney (SR) and Blacktown (C)	Blacktown (C)
		Blue Mountains (C)
		Hawkesbury (C)
		Penrith (C)

MAJOR STATISTICAL REGION	STATISTICAL REGION/ STATISTICAL REGION SECTOR	STATISTICAL LOCAL AREA
SYDNEY <i>continued</i>	Lower Northern Sydney (SR)	Hunter's Hill (A) Lane Cove (A) Mosman (A) North Sydney (A) Ryde (C) Willoughby (C)
	Hornsby–Ku-ring-gai (SR) and Baulkham Hills (A)	Baulkham Hills (A) Hornsby (A) Ku-ring-gai (A)
	Northern Beaches (SR)	Manly (A) Pittwater (A) Warringah (A)
	Gosford–Wyong (SR)	Gosford (C) Wyong (A)
BALANCE OF NSW (b)	Hunter (SR)	Cessnock (C) Dungog (A) Gloucester (A) Great Lakes (A) Lake Macquarie (C) Maitland (C) Merriwa (A) Murrurundi (A) Muswellbrook (A) Newcastle (C)—Inner Newcastle (C)—Remainder Port Stephens (A) Scone (A) Singleton (A)
	Newcastle (SRS)	Cessnock (C) Lake Macquarie (C) Maitland (C) Newcastle (C)—Inner Newcastle (C)—Remainder Port Stephens (A)

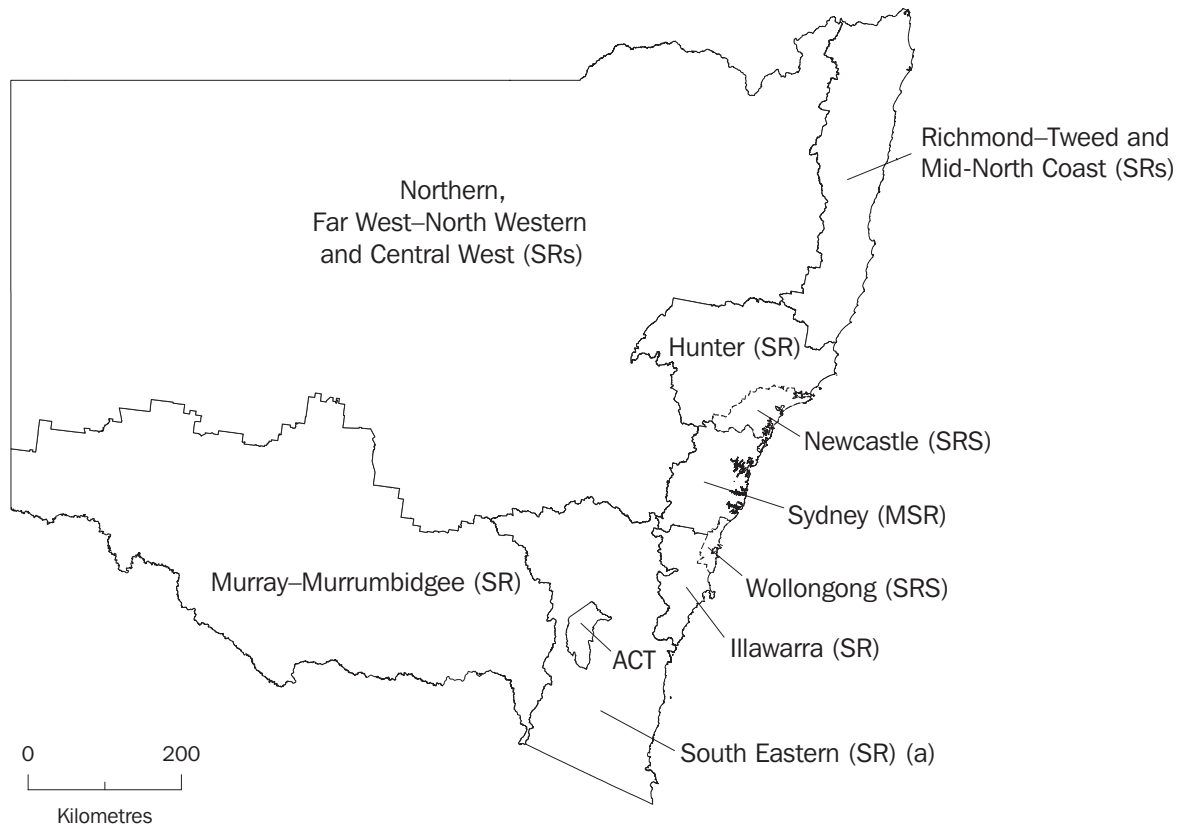
MAJOR STATISTICAL REGION	STATISTICAL REGION/ STATISTICAL REGION SECTOR	STATISTICAL LOCAL AREA
BALANCE OF NSW <i>continued</i>	Illawarra and South Eastern (SRs)	Bega Valley (A) Bombala (A) Boorowa (A) Cooma–Monaro (A) Crookwell (A) Eurobodalla (A) Goulburn (C) Gunning (A) Harden (A) Kiama (A) Mulwaree (A) Queanbeyan (C) Shellharbour (A) Shoalhaven (C) Snowy River (A) Tallaganda (A) Wingecarribee (A) Wollongong (C) Yarrolumla (A)— Part A Yarrolumla (A)—Part B Yass (A) Young (A)
	Illawarra (SR)	Kiama (A) Shellharbour (A) Shoalhaven (C) Wingecarribee (A) Wollongong (C)
	Richmond–Tweed and Mid-North Coast (SRs)	Ballina (A) Bellingen (A) Byron (A) Casino (A) Coffs Harbour (C) Copmanhurst (A) Grafton (C) Greater Taree (C) Hastings (A) Kempsey (A) Kyogle (A) Lismore (C) Lord Howe Island Macleay (A) Nambucca (A) Nymboida (A) Richmond River (A) Tweed (A)—Part A Tweed (A)—Part B Ulmarra (A)

MAJOR STATISTICAL REGION	STATISTICAL REGION/ STATISTICAL REGION SECTOR	STATISTICAL LOCAL AREA
BALANCE OF NSW <i>continued</i>	Northern, Far West–North Western and Central West (SRs)	Armidale (C) Barraba (A) Bathurst (C) Bingara (A) Bland (A) Blayney (A)—Part A Blayney (A)—Part B Bogan (A) Bourke (A) Brewarrina (A) Broken Hill (C) Central Darling (A) Cabonne (A)—Part A Cabonne (A)—Part B Cabonne (A)—Part C Cobar (A) Coolah (A) Coonabarabran (A) Coonamble (A) Cowra (A) Dubbo (C) Dumaresq (A) Evans (A)—Part A Evans (A)—Part B Forbes (A) Gilgandra (A) Glen Innes (A) Greater Lithgow (C) Gunnedah (A) Guyra (A) Inverell (A)—Part A Inverell (A)—Part B Lachlan (A) Manilla (A) Moree Plains (A) Mudgee (A) Narrabri (A) Narromine (A) Nundle (A) Oberon (A) Orange (C) Parkes (A) Parry (A) Quirindi (A) Rylstone (A) Severn (A) Tamworth (C) Tenterfield (A) Unincorporated Far West Uralla (A) Walcha (A) Walgett (A) Warren (A) Weddin (A) Wellington (A) Yallaroi (A)

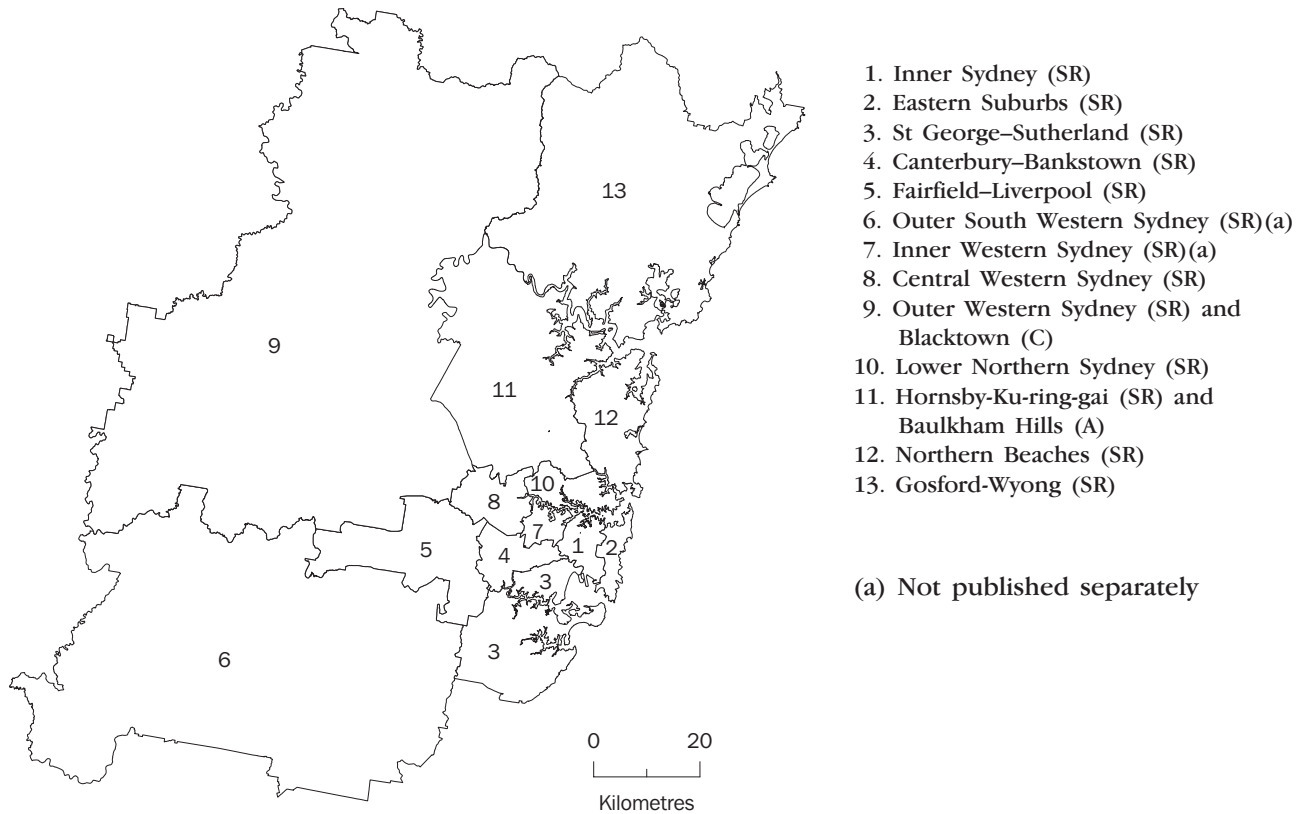
MAJOR STATISTICAL REGION	STATISTICAL REGION/ STATISTICAL REGION SECTOR	STATISTICAL LOCAL AREA
BALANCE OF NSW <i>continued</i>	Murray–Murrumbidgee (SR)	Albury (C) Balranald (A) Berrigan (A) Carrathool (A) Conargo (A) Coolamon (A) Cootamundra (A) Corowa (A) Culcairn (A) Deniliquin (A) Griffith (C) Gundagai (A) Hay (A) Holbrook (A) Hume (A) Jerilderie (A) Junee (A) Leeton (A) Lockhart (A) Murray (A) Murrumbidgee (A) Narrandera (A) Temora (A) Tumbarumba (A) Tumut (A) Urana (A) Wagga Wagga (C) Wakool (A) Wentworth (A) Windouran (A)
NOT APPLICABLE	Australian Capital Territory and South Eastern (SRs)	Australian Capital Territory Bega Valley (A) Bombala (A) Boorowa (A) Cooma–Monaro (A) Crookwell (A) Eurobodalla (A) Goulburn (C) Gunning (A) Harden (A) Mulwaree (A) Queanbeyan (C) Snowy River (A) Tallaganda (A) Yarrowlumla (A)—Part A Yarrowlumla (A)—Part B Yass (A) Young (A)



REGIONS OF NSW AND ACT



REGIONS OF SYDNEY (MSR)



## TECHNICAL NOTE: DATA RELIABILITY

### SOURCES OF ERROR

There are a number of possible sources of error in sample surveys and these can be classified into two types: sampling error; and non-sampling error.

### NON-SAMPLING ERRORS

Non-sampling errors may arise as a result of errors in the reporting, recording or processing of the data and can occur even if there is a complete enumeration of the population. Non-sampling errors can be introduced through: inadequacies in the questionnaire; non-response; inaccurate reporting by respondents; errors in the application of survey procedures; incorrect recording of answers; and errors in data entry and processing.

It is difficult to measure the size of the non-sampling errors and the extent of these errors could vary considerably in significance from survey to survey, and from question to question. However, every effort is made in the design of the survey and development of survey procedures to minimise the effect of these errors.

### SAMPLING ERRORS

Sampling error is the error which occurs by chance because the data were only obtained from a sample, not the entire population.

#### Standard errors of estimates

One measure of the variability of estimates which occurs as a result of surveying only a sample of the population is the standard error (SE). There are about two chances in three that a survey estimate is within one standard error of the figure that would have been obtained if all persons had been included and about 19 chances in 20 that it is within two standard errors. That is, there are 19 chances in 20 that the true estimate is in the range:

$$X - 2 \times SE(X) \text{ to } X + 2 \times SE(X)$$

(where  $X$  is the estimate)

The standard error of an estimate can be obtained from the tables on pages 61–63. Linear interpolation should be used to calculate the standard error of estimates falling between the sizes of estimates listed in the table (see example on page 60).

In the tables in this publication, only estimates with relative standard errors of 25% or less, and percentages based on such estimates, are considered sufficiently reliable for most purposes. However, estimates and percentages with larger relative standard errors have been included and are preceded by an asterisk (e.g. \*3.4) to indicate they are subject to high standard errors and should be used with caution.

Standard errors of estimates *continued* The standard error can also be expressed as a percentage of the estimate and this is known as the relative standard error (RSE). The RSE is determined by dividing the standard error of an estimate SE(X) by the estimate X and expressing it as a percentage. That is:

$$RSE(X) = \frac{SE(X) \times 100}{X}$$

(where X is the estimate)

The look up list on the following page provides a guide for the calculation of standard errors and relative standard errors for a range of statistics.

#### CALCULATING STANDARD ERRORS

The methods described below refer to the calculation of standard errors for NSW estimates. Standard errors of ACT estimates should be calculated from the table on page 63.

MEASURE OF RELIABILITY TO BE DETERMINED	METHOD
Standard errors of estimates of employed persons.	Determine the SE from the table on page 61 directly.
Standard errors of estimates of unemployed persons.	Multiply the SE from the table on page 61 by 1.06.
Standard errors of estimates of persons not in the labour force.	Multiply the SE from the table on page 61 by 1.1.
Standard errors of rates (e.g. the unemployment rate which is based on the number of unemployed persons expressed as a percentage of the number of persons in the labour force).	Determine the RSE of the numerator (X) and the denominator (Y) then apply the following formula: $RSE \left( \frac{X}{Y} \right) = \sqrt{[RSE(X)]^2 - [RSE(Y)]^2}$
Standard error of average duration of unemployment.	Determine the RSE for the number of persons on which the average is based and multiply this by 1.3.
Standard error of median duration of unemployment.	Determine the RSE for the number of persons on which the average is based and multiply this by 2.0.
Standard error of monthly movements.	From the table on page 62, look up the SE of the larger estimate.
Standard error of quarterly movements.	Determine the standard error of the larger estimate from the table on page 61 and multiply this by 1.11.
Standard error of annual movements.	Determine the standard error of the larger estimate from the table on page 61 and multiply this by 1.3.

## LINEAR INTERPOLATION

Linear interpolation is used to determine the standard error of an estimate which falls between two values listed in the size of estimate column in the tables on page 61 or 63. Linear interpolation is best described using an example. In May 2000, there were 755,300 ( $X_e$ ) employed persons working part-time in NSW. This estimate falls between the values 500,000 ( $X_l$ ) and 1,000,000 ( $X_u$ ) in the table on page 61.

The standard error of the estimate is determined as follows. Firstly calculate

$$\begin{aligned} F &= \frac{X_e - X_l}{X_u - X_l} \\ &= \frac{755,300 - 500,000}{1,000,000 - 500,000} \\ &= 0.51 \end{aligned}$$

Secondly, calculate the standard error of the estimate,  $SE(X_e)$  thus:

$$\begin{aligned} SE(X_e) &= SE(X_l) + (F \times [SE(X_u) - SE(X_l)]) \\ &= 8,350 + (0.51 \times [11,650 - 8,350]) \\ &= 10,033 \end{aligned}$$

Therefore the standard error of the number of employed persons working part-time in NSW in May 2000 is 10,033.

**STANDARD ERRORS**
**LEVEL OF ESTIMATES(a), NSW**
**REGIONS IN SYDNEY (MSR)**

<i>Size of estimate</i>	<i>NSW</i>	<i>Sydney (MSR)</i>	<i>Balance of NSW (MSR)</i>	<i>Inner Sydney and Inner Western Sydney (SRs)</i>	<i>Inner Sydney (SR)</i>	<i>Eastern Suburbs (SR)</i>	<i>St George-Sutherland</i>	<i>Canterbury-Bankstown (SR)</i>	<i>Fairfield-Liverpool and Outer South Western Sydney (SRs)</i>	<i>Fairfield-Liverpool (SR)</i>
500	320	440	400	310	290	240	200	260	310	300
1 000	520	630	640	460	440	360	310	390	460	450
3 000	1 000	1 060	1 060	880	830	680	590	740	880	850
5 000	1 350	1 340	1 340	1 180	1 110	910	790	990	1 180	1 140
10 000	1 900	1 820	1 810	1 740	1 630	1 340	1 160	1 460	1 730	1 680
20 000	2 600	2 440	2 420	2 540	2 380	1 960	1 700	2 130	2 530	2 450
50 000	3 700	3 500	3 520	4 130	3 880	3 190	2 760	3 470	4 120	3 990
100 000	4 600	4 500	4 600	5 900	5 600	4 600	4 000	5 000	5 900	5 700
200 000	5 750	5 800	6 000	8 400	7 900	6 500	5 600	7 100	8 400	8 100
300 000	6 700	6 700	6 900	10 300	9 600	7 900	6 900	8 600	10 200	9 900
500 000	8 350	7 900	8 300	13 200	12 400	10 200	8 800	11 100	13 100	12 700
1 000 000	11 650	9 800	10 600	—	—	—	—	—	—	—
2 000 000	17 150	12 000	13 300	—	—	—	—	—	—	—
5 000 000	30 750	15 300	17 700	—	—	—	—	—	—	—

**REGIONS IN SYDNEY (MSR)—continued**

<i>Size of estimates</i>	<i>Central Western Sydney (SR)</i>	<i>Outer Western Sydney (SR) and Blacktown (C)</i>	<i>Lower Northern Sydney (SR)</i>	<i>Hornsby-Ku-ring-gai (SR) and Baulkham Hills (A)</i>	<i>Northern Beaches</i>	<i>Gosford Wyong (SR)</i>
500	230	260	270	260	260	230
1 000	340	400	410	390	400	350
3 000	650	760	770	750	760	670
5 000	870	1 010	1 030	1 000	1 010	890
10 000	1 290	1 490	1 520	1 480	1 490	1 310
20 000	1 880	2 180	2 220	2 150	2 170	1 920
50 000	3 060	3 550	3 620	3 510	3 540	3 120
100 000	4 400	5 100	5 200	5 000	5 100	4 500
200 000	6 200	7 200	7 300	7 100	7 200	6 400
300 000	7 600	8 800	9 000	8 700	8 800	7 800

**REGIONS IN BALANCE OF NSW (MSR)**

<i>Size of estimates</i>	<i>Hunter (SR)</i>	<i>Newcastle (SRS)</i>	<i>Illawarra and South Eastern (SRS)</i>	<i>Illawarra (SR)</i>	<i>Wollongong (SRS)</i>	<i>Richmond-Tweed and Mid North Coast (SRs)</i>	<i>Northern, Far West and North Western and Central West (SRs)</i>	<i>Murray-Murrumbidgee (SR)</i>
500	300	280	310	290	240	340	330	340
1 000	450	420	470	440	360	510	500	520
3 000	850	810	900	830	680	970	940	990
5 000	1 140	1 080	1 200	1 110	910	1 300	1 260	1 320
10 000	1 680	1 590	1 770	1 630	1 340	1 920	1 860	1 950
20 000	2 450	2 320	2 580	2 390	1 950	2 800	2 720	2 850
50 000	4 000	3 780	4 210	3 890	3 180	4 560	4 430	4 640
100 000	5 700	5 400	6 000	5 600	4 600	6 500	6 300	6 600
200 000	8 100	7 700	8 600	7 900	6 500	9 300	9 000	9 400
300 000	9 900	9 400	10 500	9 700	7 900	11 300	11 000	11 500

(a) Standard errors of estimates from September 1997. For standard errors for earlier periods, see previous issues of this publication.

**STANDARD ERRORS**
**MOVEMENT ESTIMATES(a), NSW**
**REGIONS IN SYDNEY (MSR)**

<i>Size of estimates</i>	NSW	Sydney (MSR)	Balance of NSW (MSR)	Inner Sydney and Inner Western Sydney (SRs)	Inner Sydney (SR)	Eastern Suburbs (SR)	St George-Sutherland (SR)	Canterbury-Bankstown (SR)	Western Sydney (SRs)	Fairfield-Liverpool and Outer South Fairfield-Liverpool (SR)
500	580	600	580	310	280	210	200	250	270	240
1 000	730	750	720	420	380	290	270	340	370	340
3 000	1 060	1 070	1 030	700	640	490	460	570	620	560
5 000	1 260	1 270	1 220	890	810	620	580	720	790	710
10 000	1 590	1 600	1 500	1 250	1 100	850	800	1 000	1 100	1 000
20 000	2 010	2 000	1 900	1 700	1 550	1 200	1 100	1 350	1 500	1 350
50 000	2 740	2 700	2 550	2 600	2 350	1 800	1 700	2 100	2 300	2 100
100 000	3 460	3 500	3 200	3 600	3 250	2 500	2 300	2 900	3 150	2 850
200 000	4 370	4 200	4 000	4 950	4 450	3 450	3 200	4 000	4 400	3 950
300 000	5 000	4 800	4 600	5 950	5 400	4 150	3 850	4 800	5 300	4 750
500 000	5 950	5 700	5 400	7 550	6 850	5 250	4 900	6 100	6 700	6 050
1 000 000	7 510	7 100	6 800	—	—	—	—	—	—	—
2 000 000	9 490	8 900	8 500	—	—	—	—	—	—	—
5 000 000	12 920	12 000	11 400	—	—	—	—	—	—	—

**REGIONS IN SYDNEY (MSR)—continued**

<i>Size of estimate</i>	Central Western Sydney (SR)	Outer Western Sydney (SR) and Blacktown (C)	Lower Northern Sydney (SR)	Hornsby-Ku-ring-gai (SR) and Baulkham Hills (A)	Northern Beaches (SR)	Gosford Wyong(SR)
500	210	280	250	180	220	220
1 000	290	390	340	250	300	310
3 000	480	650	570	420	500	520
5 000	600	820	720	540	630	650
10 000	850	1 150	1 000	750	850	900
20 000	1 150	1 550	1 400	1 000	1 200	1 250
50 000	1 750	2 400	2 100	1 550	1 850	1 900
100 000	2 450	3 300	2 900	2 150	2 500	2 650
200 000	3 350	4 550	4 000	3 000	3 500	3 650
300 000	4 050	5 500	4 850	3 600	4 200	4 400

**REGIONS IN BALANCE OF NSW (MSR)**

<i>Size of estimate</i>	Hunter (SR)	Newcastle (SRS)	Illawarra and South Eastern (SRS)	Illawarra (SR)	Wollongong (SRS)	Richmond-Tweed and Mid North Coast (SRs)	Northern, Far West North Western and Central West (SRs)	Murray-Murrumbidgee (SR)
500	290	270	300	260	220	320	310	280
1 000	400	370	410	360	300	440	430	390
3 000	660	620	690	600	500	740	720	650
5 000	840	780	870	760	630	930	910	830
10 000	1 150	1 100	1 200	1 050	850	1 300	1 250	1 150
20 000	1 600	1 500	1 650	1 450	1 200	1 800	1 750	1 600
50 000	2 450	2 300	2 550	2 200	1 850	2 700	2 650	2 400
100 000	3 400	3 150	3 500	3 050	2 550	3 750	3 650	3 350
200 000	4 650	4 350	4 800	4 200	3 500	5 200	5 050	4 600
300 000	5 650	5 250	5 800	5 100	4 250	6 250	6 100	5 550

(a) Standard errors of month to month movements from October 1997–November 1999 onwards. For standard errors for earlier periods, see previous issues of this publication.

## STANDARD ERRORS

### STANDARD ERRORS, LEVEL ESTIMATES(a)—NSW AND ACT

<i>Size of estimate</i>	<i>ACT and South Eastern (SRs)</i>	<i>ACT</i>
500	280	210
1 000	390	270
3 000	620	400
5 000	770	500
10 000	1 020	600
20 000	1 340	800
50 000	1 910	1 200
100 000	2 500	1 650
200 000	3 200	2 250
300 000	3 700	2 700

(a) Standard errors of estimates from September 1997. For standard errors for earlier periods, see previous issues of this publication.

### STANDARD ERRORS, MOVEMENT ESTIMATES(a)—NSW AND ACT

<i>Size of estimate</i>	<i>ACT and South Eastern (SRs)</i>	<i>ACT</i>
500	220	170
1 000	280	210
3 000	420	310
5 000	510	360
10 000	650	450
20 000	850	570
50 000	1 200	760
100 000	1 550	960
200 000	2 000	1 200
300 000	2 300	1 370

(a) Standard errors of month to month movements from October 1997–November 1999 onwards. For standard errors for earlier periods, see previous issues of this publication.

## FOR MORE INFORMATION...

- INTERNET* **www.abs.gov.au** the ABS web site is the best place to start for access to summary data from our latest publications, information about the ABS, advice about upcoming releases, our catalogue, and Australia Now—a statistical profile.
- LIBRARY* A range of ABS publications is available from public and tertiary libraries Australia-wide. Contact your nearest library to determine whether it has the ABS statistics you require, or visit our web site for a list of libraries.
- CPI INFOLINE* For current and historical Consumer Price Index data, call 1902 981 074 (call cost 77c per minute).
- DIAL-A-STATISTIC* For the latest figures for National Accounts, Balance of Payments, Labour Force, Average Weekly Earnings, Estimated Resident Population and the Consumer Price Index call 1900 986 400 (call cost 77c per minute).

**INFORMATION SERVICE**

Data which have been published and can be provided within five minutes are free of charge. Our information consultants can also help you to access the full range of ABS information—ABS user-pays services can be tailored to your needs, time frame and budget. Publications may be purchased. Specialists are on hand to help you with analytical or methodological advice.

- PHONE* **1300 135 070**
- EMAIL* **client.services@abs.gov.au**
- FAX* 1300 135 211
- POST* Client Services, ABS, GPO Box 796, Sydney 1041

## WHY NOT SUBSCRIBE?

ABS subscription services provide regular, convenient and prompt deliveries of ABS publications and products as they are released. Email delivery of monthly and quarterly publications is available.

- PHONE* 1300 366 323
- EMAIL* subscriptions@abs.gov.au
- FAX* 03 9615 7848
- POST* Subscription Services, ABS, GPO Box 2796Y, Melbourne 3001



2620110005009  
ISSN 1322-0179

RRP \$23.00

© Commonwealth of Australia 2000